



MISSISSIPPI STATE UNIVERSITY WOMEN'S BASKETBALL

Cassie Chance, Women's Basketball Contact
Assistant Director, Athletic Media Relations
Post Office Box 5308, Mississippi State, MS 39762
O: 662.325.0972 · C: 662.617.4644 · F: 662.325.2563
cchance@athletics.msstate.edu · www.msstateathletics.com

Mississippi State Lady Bulldogs (13-7, 1-4 SEC) vs. Alabama Crimson Tide 8-12, 1-4 SEC)
Thursday, January 31, 2008 · 7 p.m. CT · Humphrey Coliseum (10,500) · Starkville, Miss.

SCHEDULE / RESULTS

NOVEMBER

4	DT3 (Exhibition)	W, 86-66
9	SE LOUISIANA	W, 71-55
11	CENTENARY	W, 76-57
15	at Belmont	W, 66-51
18	MERCER	W, 89-51
22	vs. Iowa	L, 54-60
23	vs. #10 Oklahoma	L, 73-88
27	ARKANSAS-PINE BLUFF	W, 85-56
29	SOUTHERN MISSISSIPPI	W, 77-56

DECEMBER

2	at Memphis	W, 92-57
13	at Louisiana Tech	W, 63-50
16	GEORGIA TECH	L, 58-70
20	MCNEESE STATE	W, 94-52
30	LOUISIANA-LAFAYETTE	W, 80-55

JANUARY

3	at UAB	W, 79-69
7	MISSISSIPPI VALLEY	W, 104-45
10	at Vanderbilt	L, 72-50
13	KENTUCKY	L, 60-64
20	at #8 LSU	L, 31-84
24	MISSISSIPPI	W, 57-52
27	at Arkansas	L, 56-42
31	ALABAMA	7 P.M.

FEBRUARY

3	at Auburn	2 p.m.
7	TENNESSEE	7 P.M.
10	FLORIDA (RSN)	1:30 P.M.
14	at Mississippi	7 p.m.
17	GEORGIA	2 P.M.
21	at South Carolina	6 p.m.
24	at Tennessee (RSN)	1:30 p.m.

MARCH

2	LSU (FSN)	2:30 P.M.
6-9	SEC Tournament (\$)	TBA

- ! Caribbean Challenge - Cancun, Mexico
\$ The Sommet Center - Nashville, Tenn.

SERIES INFORMATION

Overall series: Alabama leads 33-9
In Starkville: Alabama leads 16-4
In Tuscaloosa: Alabama leads 15-4
At neutral sites: Alabama leads 2-1
MSU's series streak: Won 1
Smith vs. MSU: 1-1 (1-1 at UA)
Fanning vs. UA: 12-16 (6-8 at MSU)
Last Meeting: Mississippi State 89, Alabama 70 (Feb. 22, 2007 in Tuscaloosa, Ala.)



Sharon Fanning	Head Coach	Stephany Smith
207-168 (13)	Record at School (Yrs.)	17-45 (3)
530-394 (34)	Career Record (Yrs.)	180-139 (10)
at Arkansas (L, 42-56)	Last Game	vs. Auburn (L, 48-62)
NR/NR	Ranking (AP/Coaches)	NR/NR
132	NCAA RPI (through 1/20)	168
131	Real Time RPI (through 1/29)	214
183	Real Time SOS (through 1/29)	111
Lost 1	Current Team Streak	Lost 4
Tysheka Grimes (12.3 ppg)	Leading Scorer	Tierney Jenkins (11.2 ppg)
Tysheka Grimes (5.9 rbg)	Leading Rebounder	Talisha Chandler (8.2 rbg)
Marneshia Richard (4.3 apg)	Leading Assists	Dedrea Magee (3.6 apg)

MEDIA BROADCAST INFORMATION AND TICKETS

Television: None
Mississippi State Radio: WFCA 107.9 FM (French Camp, Miss.)
Alabama Radio: Crimson Tide Sports Network
Live Stats: www.msstateathletics.com
Tickets: Available through the MSU Athletic Ticket Office - opens one hour prior to tipoff

2007-08 GAME NOTES

MISSISSIPPI STATE PROBABLE STARTERS

#	Name	Pos.	Ht.	Cl.	Exp.	Hometown	FG%	3FG%	FT%	PPG	RBG	APG
2	Alexis Rack	G	5-7	So.	1L	Franklin, LA	.315	.323	.593	11.8	3.7	3.0
23	Tysheka Grimes	F	6-0	So.	1L	Baton Rouge, LA	.389	.310	.682	12.3	5.9	1.8
24	Robin Porter	F	5-11	Jr.	2L	Abbeville, AL	.392	.350	.765	6.1	4.6	1.1
25	Marneshia Richard	G	5-8	Jr.	2L	Lamar, MS	.439	.379	.732	9.3	3.0	4.3
45	Imesia Jackson	F	6-1	Sr.	1L	Crawford, MS	.450	--	.653	9.1	5.5	0.6

MISSISSIPPI STATE RESERVES

33	Mary Kathryn Govero	G	5-11	Fr.	HS	Clinton, MS	.387	.083	.706	6.0	4.2	1.5
14	Bethany Washington	F	5-11	So.	1L	Houma, LA	.441	.300	.429	4.9	3.1	1.2
3	Donnisha Tate	F	6-2	Jr.	RS	Oakland, CA	.464	--	.574	4.6	4.8	0.6
13	Amy Reeder	G	6-0	Sr.	3L	Pontotoc, MS	.300	.250	.250	1.6	0.4	0.3
1	Danielle Rector	F	6-3	Fr.	HS	Ringgold, GA	.320	.429	.714	2.6	1.4	0.3
22	Miayorka Johnson	G	5-10	Sr.	3L	Ripley, MS	.632	.000	.667	2.2	0.8	0.5
20	Lauren Roberts	F	5-11	Jr.	2L	Collierville, TN	.235	.273	.400	1.2	1.5	0.2
32	Shai Wilkins	F	6-2	Fr.	HS	Harvest, AL	.455	--	.750	1.3	1.1	0.1
42	Channa Campbell	F	6-2	So.	1L	Lester, AL	.300	.250	.833	1.6	1.4	--
12	Carrie Landers	G	5-8	So.	1L	Paragould, AR	.333	.000	--	0.3	0.1	--

INJURY REPORT

#25 Richard is playing with a broken nose and will wear a facial mask through at least February 7.

TEAM COMPARISON

MSU		ALABAMA
1401	Scoring	1119
70.1	PPG	56.0
509-1296	FGM-FGA	421-1068
.393	FG %	.394
114-367	3FGM-3FGA	62-211
.311	3FG %	.294
269-419	FTM-FTA	215-345
.642	FT %	.623
40.7	Rebounds	40.6
14.6	Assists	11.8
17.4	Turnovers	25.8
0.8	A/TO Ratio	0.5
10.6	Steals	9.7
3.2	Blocks	4.6

INDIVIDUAL LEADERS

MISSISSIPPI STATE			ALABAMA		
Tysheka Grimes	12.3	Scoring	11.2	Tierney Jenkins	
Tysheka Grimes	5.9	Rebounding	8.2	Talisha Chandler	
Imesia Jackson	13	Charges Taken	--	--	
Marneshia Richard	4.3	Assists	3.6	Dedrea Magee	
Marneshia Richard	2.1	Steals	1.9	Tierney Jenkins	
Robin Porter	0.8	Blocks	0.9	Jenkins/Blands	
Tysheka Grimes	89	FGM	91	Tierney Jenkins	
Miayorka Johnson	.632	FG %	.575	Courtney Strauthers	
Alexis Rack	53	3FGM	21	Camilla Blands	
Danielle Rector	.429	3FG %	.600	Tamara Williams	
Imesia Jackson	66	FTM	41	Tierney Jenkins	
Channa Campbell	.833	FT %	.709	Dedrea Magee	
Marneshia Richard	1.5	A/TO Ratio	0.7	Magee/Blands/Chandler	
Marneshia Richard	31.6	Minutes	35.8	Dedrea Magee	

MISSISSIPPI STATE-ALABAMA: LAST 10 SERIES MEETINGS

Date	Result	Location	Leading Scorer	Leading Rebounder
Feb. 22, 2007	Mississippi State 89, Alabama 70	Tuscaloosa, Ala.	32, Kate Mastin (UA)	8, Harriet Barnes (UA)
Feb. 12, 2006	Alabama 61, Mississippi State 59	Starkville, Miss.	12, by six players	14, Dee Merriweather (UA)
Jan. 30, 2005	Alabama 72, Mississippi State 61	Tuscaloosa, Ala.	28, Tan White (MSU)	9, Lauren Hill (UA)
Jan. 13, 2005	Mississippi State 84, Alabama 77	Starkville, Miss.	30, Tan White (MSU)	11, Tan White (MSU)
Feb. 29, 2004	Mississippi State 81, Alabama 78 - OT	Starkville, Miss.	30, Monique Bivins (UA)	10, Mamie McKinney (MSU)
Jan. 25, 2004	Mississippi State 65, Alabama 57	Tuscaloosa, Ala.	20, Tania Burns (MSU)	10, Mamie McKinney (MSU)
Jan. 30, 2003	Mississippi State 72, Alabama 56	Starkville, Miss.	25, Tan White (MSU)	15, Jamilah Jones (UA)
Feb. 7, 2002	Alabama 92, Mississippi State 86	Tuscaloosa, Ala.	33, LaToya Thomas (MSU)	6, LaToya Thomas (MSU) and LaNisha Cartwell (UA)
Jan. 21, 2001	Alabama 65, Mississippi State 62	Starkville, Miss.	23, LaToya Thomas (MSU)	8, Dana Benemon (MSU)
Jan. 23, 2000	Mississippi State 85, Alabama 65	Tuscaloosa, Ala.	21, Jennifer Fambrough (MSU)	9, Nitra Perry (MSU)

2007-08 GAME NOTES

ALABAMA PROBABLE STARTERS

#	Name	Pos.	Ht.	Cl.	Hometown	FG%	3FG%	FT%	PPG	RBG	APG
2	Dedrea Magee	G	5-8	So.	Picayune, MS	.343	.442	.709	9.0	4.2	3.6
5	Caitlin Hollifield	F	6-1	Fr.	Knoxville, TN	.429	.214	.484	7.1	5.3	1.1
15	Camilla Blands	G	5-11	Jr.	Naerum, DEN	.368	.296	.698	7.9	4.8	1.9
21	Tierney Jenkins	F	6-0	Fr.	Mount Juliet, TN	.450	.500	.651	11.2	7.0	0.6
40	Talisha Chandler	F	6-2	So.	Clover, SC	.375	.214	.634	6.7	8.2	2.2

ALABAMA RESERVES

22	Courtney Strauthers	F	6-4	So.	Snellville, GA	.575	--	.654	5.1	3.0	0.3
20	Varisia Raffington	G	5-11	Fr.	Tallahassee, FL	.246	.250	.500	2.2	1.2	0.5
32	Tamara Williams	G	6-0	So.	Alabaster, AL	.350	.600	.417	2.8	2.1	0.7
24	Nathalie Reshard	G	6-0	Sr.	Niceville, FL	.259	.059	.400	1.7	1.4	0.4
31	Katie Hancock	G/F	5-11	Fr.	Tupelo, MS	.667	.500	.250	6.0	1.0	2.0
4	Christy Elliott	G	5-9	Sr.	Tuscaloosa, AL	--	--	--	--	--	--
12	Taylor Allen	G	5-7	Sr.	Pinson, AL	--	--	--	--	--	--

INJURY REPORT

33	Dalesha Carn	G	6-0	Fr.	Jacksonville, FL	out (knee)
----	--------------	---	-----	-----	------------------	------------

SEC STANDINGS

THROUGH JANUARY 29, 2008

	Team	SEC	Pct.	All	Pct.	Streak
1	Tennessee	5-0	1.000	18-1	.947	W8
2	LSU	5-0	1.000	16-3	.842	W7
3	Kentucky	4-2	.667	10-10	.500	L1
4	Georgia	3-2	.600	16-4	.800	L1
5	Florida	3-2	.600	14-6	.700	W1
6	Vanderbilt	3-2	.600	14-6	.700	W1
7	Auburn	2-3	.400	14-6	.700	W1
8	Mississippi	2-3	.400	8-10	.444	L2
9	Arkansas	2-4	.333	17-4	.810	W1
10	Mississippi State	1-4	.200	13-7	.650	L1
11	Alabama	1-4	.200	8-12	.400	W1
12	South Carolina	0-5	.000	11-9	.550	L5

AROUND THE LEAGUE

TONIGHT'S GAMES

Alabama at Mississippi State
South Carolina at LSU
Tennessee at Mississippi (CSS)
Vanderbilt at Florida
Kentucky at Georgia (RSN)

SUNDAY'S GAMES

Mississippi State at Auburn
LSU at Florida (FSN)
Alabama at Mississippi
Vanderbilt at Georgia
Arkansas at South Carolina
Kentucky at Tennessee

MONDAY, JANUARY 28

Tennessee 67, Duke 64

SUNDAY, JANUARY 27

Mississippi State 42, Arkansas 56
LSU at Kentucky
Mississippi at Vanderbilt
Auburn at Alabama
Florida at South Carolina
Georgia at Oklahoma

THURSDAY, JANUARY 24

Mississippi 52, Mississippi State 57
LSU 79, Auburn 59
Georgia 82, Florida 55
Kentucky 66, South Carolina 62
Arkansas 55, Tennessee 98

MSU IN THE NCAA RANKINGS (THROUGH 1/27)

47th	Steals per Game	10.6
48th	Scoring Margin	10.1

MSU IN THE SEC RANKINGS (THROUGH 1/29) - OVERALL

1st	Offensive Rebounds	15.60
2nd	3FG Percentage Defense	.288
2nd	Turnover Margin	4.8
4th	Steals	10.55
4th	3FG Made	5.70
5th	Rebounding Offense	40.7
5th	Scoring Offense	70.1
5th	FG Percentage Defense	.373
7th	Assist/Turnover Ratio	0.84
7th	Assists	14.55
7th	Scoring Defense	60.0
7th	Scoring Margin	10.1
9th	Rebounding Defense	37.8
9th	3FG Percentage	.311
10th	Rebounding Margin	2.9
10th	FT Percentage	.642
11th	FG Percentage	.393
12th	Defensive Rebounds	25.10
12th	Blocked Shots	3.15

MSU IN THE SEC RANKINGS (THROUGH 1/29) - SEC GAMES

1st	3FG Percentage Defense	.218
5th	FG Percentage Defense	.407
7th	Scoring Defense	65.6
8th	Offensive Rebounds	11.80
8th	Turnover Margin	-1.20
9th	Defensive Rebounds	22.20
9th	3FG Made	4.40
9th	Assist/Turnover Ratio	0.56
10th	FT Percentage	.641
10th	Steals	6.40
11th	Rebounding Offense	34.0
11th	3FG Percentage	.247
11th	Blocked Shots	2.20
11th	Assists	9.00
12th	Rebounding Defense	42.2
12th	Rebounding Margin	-8.2
12th	FG Percentage	.281
12th	Scoring Offense	48.0
12th	Scoring Margin	-17.6

MSU IN THE SEC RANKINGS (THROUGH 1/29) - OVERALL

2nd	Alexis Rack	3FG Made	2.65
5th	Marneshia Richard	Assists	4.32
5th	Alexis Rack	3FG Percentage	.323
6th	Marneshia Richard	Assist/Turnover Ratio	1.49
10th	Marneshia Richard	Steals	2.11
11th	Imesia Jackson	FT Percentage	.653
12th	Alexis Rack	Assist/Turnover Ratio	0.87
12th	Imesia Jackson	Offensive Rebounds	2.75
13th	Alexis Rack	Assists	3.00
16th	Tysheka Grimes	Scoring	12.3
17th	Alexis Rack	Scoring	11.8
20th	Tysheka Grimes	Rebounding	5.9

MSU IN THE NCAA RANKINGS (THROUGH 1/27)

22nd	Alexis Rack	3FG Made per Game	2.7
------	-------------	-------------------	-----

LADY BULLDOG BASKETBALL ON THE AIR

This afternoon's game will be broadcast locally by the Bulldog Sports Network on WFCA 107.9 FM, based out of French Camp, Miss. Jim Ellis will call the action.

SCOUTING ALABAMA

The Crimson Tide enters Thursday night's game 8-12 on the year and 1-4 in the league. Alabama has dropped four straight SEC games after defeating South Carolina 65-54 in the conference opener. Tierney Jenkins leads the team in scoring with 11.2 points per game. Talisha Chandler is the squad's leading rebounder with 8.2 boards each time out.

THE ALABAMA SERIES

Alabama leads the all-time series with Mississippi State, 33-9. Six of MSU's wins have come in the last 10 meetings (since the 1999-00 season). Alabama holds a 16-4 advantage in games played in Starkville and 15-4 in games played in Tuscaloosa. Complete series results can be found in the 2007-08 MSU Women's Basketball Media Guide on page 146.

A CLOSER LOOK AT THE LAST FIVE MEETINGS

MSU leads 3-2 in the last five meetings (5-2 in the last seven). MState has scored 74.8 points per game in those last five, while the Crimson Tide has scored 71.6 points. The last two meetings have seen the visiting team take the win.

FANNING: 500 AND COUNTING

Mississippi State Head Coach Sharon Fanning reached the 500-win plateau, 31 years into her career, on Nov. 10, 2006, when the Lady Bulldogs defeated Troy. All of Fanning's 529 career wins have come at the Division I level. With a 77-56 win over Southern Mississippi on Nov. 29, MState Head Coach Sharon Fanning got her 200th win at Mississippi State.

ALL-TIME IN JANUARY GAMES

MState is 46-57 in the month of January during the Sharon Fanning era.

AGAINST THE STATE OF ALABAMA THIS YEAR

MSU is 1-0 against the Yellowhammer State this year (79-69 vs. UAB on Jan. 3 of this year).

AGAINST 2006-07 NCAA TOURNAMENT TEAMS

MSU is 3-4 this season against teams that made the NCAA Tournament a year ago. The Lady Bulldogs still have to face LSU for a second time on March 2 in Starkville, Georgia and defending national champion Tennessee twice.

THREE HIT 500-POINT MARK

During the non-conference season, three Lady Bulldogs eclipsed the 500-point mark of their careers - Marneshia Richard (Nov. 22 vs. Iowa), Imesia Jackson (Dec. 2 vs. Memphis) and Alexis Rack (Jan. 7 vs. Mississippi Valley State). The trio joins Robin Porter as the only Lady Bulldogs to have reached the milestone. Sophomore forward Tysheka Grimes is approaching the mark. She is 37 points shy.

2007-08 GAME NOTES

SOMETHING POSITIVE TO THINK ABOUT

Mississippi State has posted a positive assist/turnover ratio in eight games this season.

Date	Opponent	Assists	Turnovers
Jan. 13	Kentucky	14	9
Jan. 7	Mississippi Valley	24	17
Jan. 3	at UAB	17	13
Dec. 20	McNeese State	23	18
Dec. 2	Memphis	23	16
Nov. 29	Southern Mississippi	18	12
Nov. 27	Arkansas-Pine Bluff	22	18
Nov. 11	Centenary	16	9

STATE GETS FIRST CONFERENCE WIN

A pair of back-to-back late second half three-pointers from sophomore Tysheka Grimes put the Mississippi State women's basketball team (13-6, 1-3 Southeastern Conference) up by seven, and the Lady Bulldogs held on for a 57-52 win over archrival Mississippi (8-9, 2-2 SEC) Jan. 24 at Humphrey Coliseum. Junior guard Marneshia Richard led the way for Mississippi State, scoring 14 points in 39 minutes of action. With four assists on the night, Richard moved into 10th place on the all-time MSU assist list with 272. The Lady Bulldogs also had two other players score in double figures. Porter and sophomore guard Alexis Rack each added 11 points for MSU.

LADY BULLDOGS STRUGGLE AT LSU

State's 53-point loss (84-31) to #8 LSU was the largest deficit posted against the Lady Bulldogs since 1997. MState's nine field goals made and 15.3 field goal percentage was also the lowest in a single game in the program's 34-year history.

STATE SHOOTS BIG AGAINST MISSISSIPPI VALLEY

State's .649 field goal percentage against Mississippi Valley State is tied for the seventh highest in a single game this season (Connecticut vs. Old Dominion and Utah vs. UC-Irvine).

RECORD GAME AGAINST MISSISSIPPI VALLEY

MSU's 104-45 win over Mississippi Valley Monday night was the Lady Bulldogs' first time to hit the century mark since defeating New Orleans 100-52 on Dec. 21, 2001. The 59-point margin of victory also tied for the fifth-highest in school history. State's highest margin of victory in the Sharon Fanning era is 70 points (106-36) versus the Delta Devils on Dec. 20, 1999.

MSU SNAPS NATION'S SECOND-LONGEST WIN STREAK

With a 66-51 win over Belmont, MSU stopped the nation's second longest home winning streak at 23 games.

MOVING ON UP

Sophomore forward Tysheka Grimes is 16 points shy of her 500th career point, while junior guard Marneshia Richard has 275 career assists and now ranks 10th on the all-time list. Grimes would become the fifth current Lady Bulldog to reach the 500-point plateau.

TAKING ONE FOR THE TEAM

MState had a total of 27 charges taken by seven different players. Imesia Jackson leads the team with 13.

10-WIN SEASONS UNDER FANNING

MSU has had 12 10-win seasons and reached the postseason eight times under Sharon Fanning (four NCAA, four WNIT).

1995-96	13-4 (4-7 SEC, T8th)
1996-97	11-16 (1-11 SEC, T10th)
1997-98	14-15 (4-10 SEC, T9th)
1998-99	17-11 (7-7 SEC, T5th)
1999-00	24-8 (8-6 SEC, 5th)
2000-01	17-14 (4-10 SEC, T9th)
2001-02	19-12 (8-6 SEC, T4th)
2002-03	24-8 (10-4 SEC, T3rd)
2003-04	14-15 (7-7 SEC, T7th)
2004-05	17-12 (6-8 SEC, 6th)
2006-07	18-14 (7-7 SEC, 6th)
2007-08	TBD

#23 TYSHEKA GRIMES

Hit two clutch back-to-back three pointers with under eight minutes remaining to give MState needed momentum against Mississippi ... Scored a game-high 18 points against Kentucky ... Tallied her fourth career double-double with 16 points and 10 rebounds against McNeese State ... Scored in double figures in five straight games from Dec. 13-Jan. 3 ... Scored a season-high 22 points against UAB ... Hit a career-high four three-pointers against Georgia Tech ... Had four steals against Iowa for a career-high ... Posted her first double-double of the season and third of her career with 11 points and 11 boards against Mercer ... Also dished out a career-high five assists against the Bears

#2 ALEXIS RACK

With her 53 three-pointers made on the year, Rack ranks sixth on the all-time list with 117. During her freshman campaign, Rack drained 64 three-pointers, the second-highest single-season total ... Had her 32-game three-point field goal made streak snapped at LSU ... Streak was the longest by a Lady Bulldog since the three-point line was introduced in 1987 ... Brought down a career-high nine rebounds at UAB ... Hit five three-pointers in a single game on three occasions this year (Vanderbilt, Georgia Tech and Mississippi Valley State) ... Had a career-high six takeaways against Southern Mississippi

#25 MARNESHIA RICHARD

Moved into the career top 10 list with three assists against Mississippi ... Returned to the starting lineup against LSU ... Missed the first game of her career against Kentucky (broken nose) ... With eight assists against Georgia Tech, tied Angela Harris (vs. Arkansas, 2/24/99 and vs. Vanderbilt, 12/8/98) for fourth on the junior class single game list

#45 IMESIA JACKSON

Got back into double figures with 10 points against Kentucky ... Had back-to-back double-doubles, the fourth and fifth of her career, vs. Arkansas-Pine Bluff and Oklahoma ... Had 12 points and 11 boards against UABP and 18 points and 10 rebounds against #10 Oklahoma ... Shot a perfect 8-of-8 from the free-throw line against the Sooners ... Brought down a game-high 13 rebounds against Belmont for a career-high

#24 ROBIN PORTER

Brought down a season-high 10 rebounds and had 10 points for her first double-double of the season and seventh of her career against Louisiana Tech.

#33 MARY KATHRYN GOVERO

Earned her first career start in place of the injured Marneshia Richard against Kentucky ... Scored 12 points to open Southeastern Conference play at Vanderbilt ... Tallied a season-high 14 points against McNeese State ... With 12 points and 11 rebounds against Belmont, had her first career double-double in 18 minutes played

OTHER INDIVIDUAL NOTES

Junior forward DONNISHA TATE scored a season-high 12 points against UAB ... Senior guard MIAYORKA JOHNSON scored a season-high 10 points against Mississippi Valley State ... Senior guard/forward AMY REEDER also scored a season-high against the Delta Devils with eight points

FAMBROUGH TO BE HONORED AT SEC TOURNAMENT

Former Lady Bulldog Jennifer Fambrough will be honored at the 2008 Southeastern Conference Women's Basketball Tournament as MSU's SEC Great. Fambrough ranks third on the all-time scoring list with 1,677 points and sixth in rebounds with 731. Her best single outing came against Northwestern State on Dec. 19, 1998 when she scored 42 points (fourth on the single game list) and hit 18 free throws (the most ever made in a single game by a Lady Bulldog).

STATE ADDS THREE FOR 2008-09 SEASON

Mississippi State University Head Women's Basketball Coach Sharon Fanning has announced the signings of Chanel Mokango, Armelle Lumanu and Rima Kalonda, all of Kinshasa, Congo, Africa, to national letters-of-intent. The trio will begin competing for the Lady Bulldogs beginning with the 2008-09 season.

All three players are currently at Southeastern Illinois College in Harrisburg, Ill and members of the Congo National Team. The SIC squad is ranked sixth in the latest National Junior College Athletic Association Division I poll. The trio helped lead the Falcons to a conference and regional championship last season, as well as a fourth-place finish in the NJCAA national tournament.

A 2006-07 NJCAA Second Team All-American, Mokango was also named NJCAA Region XXIV Freshman of the Year a season ago and the Region XXIV Tournament Most Valuable Player. The high school all-State and all-GRAC selection at SIC was also named to the NJCAA National Tournament's all-Tournament team. The 6-5 guard/forward was the leading rebounder on the SIC team last season, bringing down 11.1 boards each time out. She was the team's second-leading scorer with 14.4 points per game and shot 56.5 percent from the floor.

In eight games played this season, Mokango leads the Falcons in scoring and rebounds with 16.4 points and 7.8 rebounds each time out.

Lumanu, a 5-9 guard/forward, was named to her high school's all-State squad in the Congo. Since being at SIC, she has been named all-GRAC and all-Region XXIV. Last season, she averaged 12.6 points and 7.9 rebounds per contest. She also led the team in steals, taking away the ball 6.1 times each game.

Already this season, Lumanu is tallying 16 points and 7.7 rebounds per game.

Kalonda, a 6-3 forward/center, averaged 8.3 points and 8.8 rebounds per game last year. Through eight games this season, Kalonda is averaging 12.8 points per game and bringing down 7.5 boards.

FIGURE THIS



Total number of weeks the Lady Bulldogs have spent in the polls. They were ranked as high as 10th in 2003 and finished the 2000 season ranked 12th.

WEEK 12 RANKINGS

AP		COACHES		
1	Connecticut (50)	19-0	Connecticut (31)	19-0
2	Tennessee	17-1	Tennessee	17-1
3	North Carolina	18-2	North Carolina	18-2
4	Rutgers	17-2	Rutgers	17-2
5	Maryland	22-2	Maryland	22-2
6	Baylor	18-1	Baylor	18-1
7	Stanford	17-3	Stanford	17-3
8	LSU	16-3	LSU	16-3
9	Duke	15-4	California	17-3
10	California	17-3	Oklahoma	13-4
11	Oklahoma	13-4	Duke	15-4
12	West Virginia	16-3	West Virginia	16-3
13	Old Dominion	16-3	Geo. Washington	16-4
14	Pittsburgh	16-3	Georgia	16-4
15	Wyoming	18-1	Old Dominion	16-3
16	Geo. Washington	16-4	Wyoming	18-1
17	Georgia	16-4	Ohio State	15-4
18	Kansas State	14-5	Oklahoma State	16-3
19	Ohio State	15-4	Pittsburgh	16-3
20	Notre Dame	15-5	Notre Dame	15-5
21	Oklahoma State	16-3	Kansas State	14-5
22	Syracuse	16-3	Syracuse	16-3
23	DePaul	15-4	Texas A&M	14-6
24	Illinois State	17-1	DePaul	15-4
25	Texas	15-5	Texas	15-5

RECEIVING VOTES:

Texas A&M 76, Utah 47, Nebraska 34, UTEP 33, Georgia Tech 24, Auburn 18, Virginia 16, Minnesota 14, Arizona State 13, Marist 11, Vanderbilt 8, Michigan State 7, Liberty 2, Louisville 1

RECEIVING VOTES:

Auburn 63, Illinois State 55, Utah 26, Georgia Tech 26, Marist 19, Arizona State 16, Western Kentucky 15, Hartford 14, Liberty 14, Vanderbilt 10, Minnesota 9, Middle Tennessee State 5, Nebraska 5, N.C. State 3, UTEP 3

AN MSU WIN WOULD...

- Give MSU's its 10th series victory over the Crimson Tide and seventh win in the last 11 meetings.
- Be MSU's 10 the home win of the 2007-08 campaign, an improvement over last year's 9-8 home mark.
- Put State 2-4 in league play.
- Be the first time the home team has won in the series since the 2004-05 season.
- Move Coach Sharon Fanning's MSU mark against the Crimson Tide to 7-8 in 13 seasons.

2007-08 GAME NOTES

DAWG WATCH

- Sophomore forward **TYSHEKA GRIMES** is 16 points shy of her 500th career point. Grimes is nine blocks shy of entering the career top 10 list in the category.
- Sophomore guard **ALEXIS RACK** had her three-point field goals made streak of 32 games come to an end Sunday afternoon at LSU. Rack is ranked 22nd in the nation with 2.7 three-point field goals made per game.
- With three assists against Mississippi, junior guard **MARNESHIA RICHARD** moved into 10th on the all-time list. She now has 275 career assists. Richard is 26 assists shy of entering the junior class single season records list for assists and 18 steals away from accomplishing the same feat in that category. She is also four steals shy of the career top 10 list.

IN THE LAST FIVE GAMES

During the last five games, Mississippi State

- Is 1-4
- Has yet to win on the road (0-2)
- Averages 48.0 points per game
- Has one player in double figures (Rack - 10.0 ppg)
- Averages nine assists per game
- Has six players with double figure rebounds
- Is holding opponents to .218 three-point field goal percentage

THE 500-CLUB

During the Sharon Fanning era

- LaToya Thomas (1999-03) 2,981
- Tan White (2001-05)..... 2,421
- Jennifer Fambrough (1998-02) 1,677
- LaCharlotte Smith (1992-96)..... 1,533
- Sharon Thompson (1994-98)..... 1,526
- Nitra Perry (1996-00)..... 1,124
- Jemmye Ann Helms (1992-97)..... 917
- Cynthia Hall (1997-01)..... 891
- LaToya Graham (1995-99) 832
- Evette Porter (1995-98)..... 750
- Tiania Burns (2003-05) 729
- Stacie Farris (1995-98) 722
- Robin Porter (2005-present).....696**
- Mamie McKinney (2002-06)..... 641
- Marneshia Richard (2005-present)635**
- Sabrina Scott (1995-98)..... 626
- Rebecca Kates (2001-05) 615
- Meadow Overstreet (1997-01)..... 614
- Doceide Warren (2002-06)..... 610
- Imesia Jackson (2006-present).....577**
- Alexis Rack (2006-present).....566**
- Blessing Chekwa (2002-06)..... 550

UP NEXT

MISSISSIPPI STATE (13-7, 1-4 SEC)
at
#22 AUBURN (14-6, 2-3 SEC)

Sunday, February 3, 2008 • 2 p.m.
Beard-Eaves Memorial Coliseum (10,500) • Auburn, Ala.

Auburn • Next Game: Open date
Auburn • Previous Game: Defeated Alabama, 62-48

Game Officials
Scott Yarbrough, Ken Drayton, Eddie Novak

2007-08 STARTING LINEUPS

Game	Guard	Guard	Forward	Forward	Forward
SE Louisiana	Rack	Richard	Grimes	Washington	Jackson
Centenary	Rack	Richard	Grimes	Washington	Jackson
Belmont	Rack	Richard	Grimes	Washington	Jackson
Mercer	Rack	Richard	Grimes	Porter	Jackson
Iowa	Rack	Richard	Grimes	Porter	Jackson
Oklahoma	Rack	Richard	Grimes	Porter	Jackson
UAPB	Rack	Richard	Grimes	Porter	Jackson
Southern Miss	Rack	Richard	Grimes	Porter	Jackson
Memphis	Rack	Richard	Grimes	Porter	Jackson
Louisiana Tech	Rack	Richard	Grimes	Porter	Jackson
Georgia Tech	Rack	Richard	Grimes	Porter	Jackson
McNeese State	Rack	Richard	Grimes	Porter	Jackson
UL-Lafayette	Rack	Richard	Grimes	Porter	Jackson
UAB	Rack	Richard	Grimes	Porter	Jackson
Mississippi Valley	Rack	Richard	Grimes	Porter	Jackson
Vanderbilt	Rack	Richard	Grimes	Porter	Jackson
Kentucky	Rack	Govero	Grimes	Porter	Jackson
LSU	Rack	Richard	Grimes	Porter	Jackson
Mississippi	Rack	Richard	Grimes	Porter	Jackson
Arkansas	Rack	Richard	Grimes	Porter	Jackson
Alabama					
Auburn					
Tennessee					
Florida					
Mississippi					
Georgia					
South Carolina					
Tennessee					
LSU					

2007-08 GUEST COACHES

DT3 (Exhibition)
Rebecca Price
The Reflector reporter

SE LOUISIANA
Kent Marrett
Former MSU track athlete and assistant professor in business at Washington State

CENTENARY
Carrie Thomas
Sanderson Center facilities management
Linda Collins
Hurst Hall facilities management

MERCER
Mac Smith
Sales representative with Frito-Lay, Inc.

ARKANSAS-PINE BLUFF
Carrie and Greg Olsen
Assistant professors in aerospace engineering

SOUTHERN MISSISSIPPI
Stephen Whitlock
Associate director for residence life

at Memphis
Evette Porter
Former Lady Bulldog (1995-98)

GEORGIA TECH
Bill & Jackie Henry
Lady Bulldog Booster Club members

MCNEESE STATE
John Campbell
Minister, entrepreneur and author from Starkville

LOUISIANA-LAFAYETTE
Anne Skinner
Benefits specialist in human resources at MSU

at UAB
Lynn Freeman and Wayne Hardy

MISSISSIPPI VALLEY STATE
Terry Pugh
Associate pastor at Calvary Baptist Church

KENTUCKY
Dr. Cooper Callaway
Owner, Callaway Orthodontics

MISSISSIPPI
Mr. Jack McCarty with his wife, Jimmie Faye
Director of Development, College of Business and Industry

2007-08 GAME NOTES

THE LAST MEETING

Official Basketball Box Score -- GAME TOTALS -- FINAL STATISTICS
Mississippi State vs Alabama
02-22-07 6 p.m. at Coleman Coliseum (Tuscaloosa, Ala.)

Mississippi State 89 • 17-11 (7-6 SEC)

#	Player		Total	3-Ptr	FT-FTA	Rebounds		PF	TP	A	TO	Blk	Stl	Min
			FG-FGA	FG-FGA		Off	Def							
14	Washington, Bethany	f	1-2	0-0	4-4	2	5	7	1	6	3	3	0	3
23	Grimes, Tysheka	f	7-12	2-5	4-6	0	2	2	1	20	1	1	1	0
45	Jackson, Imesia	f	4-6	0-0	4-4	1	2	3	2	12	0	1	1	0
02	Rack, Alexis	g	6-14	4-8	1-3	1	1	2	3	17	1	4	0	3
25	Richard, Marneshia	g	5-8	1-2	0-1	1	3	4	1	11	3	3	0	3
10	Workman, Bethany		0-0	0-0	0-0	0	0	0	0	0	0	0	0	1
11	Hollis, Heather		0-0	0-0	0-0	0	0	0	0	0	0	0	0	1
13	Reeder, Amy		2-3	2-3	0-0	0	0	0	0	6	0	1	0	0
20	Roberts, Lauren		2-3	0-1	0-0	0	4	4	2	4	1	1	0	1
21	Young, Katherine		0-0	0-0	0-0	0	1	1	0	0	0	1	0	0
24	Porter, Robin		3-7	0-0	7-8	2	2	4	1	13	1	1	1	0
42	Campbell, Channa		0-1	0-0	0-0	0	1	1	0	0	0	0	0	4
Team						2	2	4						
Totals			30-56	9-19	20-26	9	23	32	11	89	10	16	3	10

FG % 1st Half:	17-30	56.7%	2nd half:	13-26	50.0%	Game:	30-56	53.6%
3FG % 1st Half:	6-10	60.0%	2nd half:	3-9	33.3%	Game:	9-19	47.4%
FT % 1st Half:	8-12	66.7%	2nd half:	12-14	85.7%	Game:	20-26	76.9%

Deadball
Rebounds
1

Alabama 70 • 10-18 (0-13 SEC)

#	Player		Total	3-Ptr	FT-FTA	Rebounds		PF	TP	A	TO	Blk	Stl	Min
			FG-FGA	FG-FGA		Off	Def							
32	Williams, Tamara	f	0-1	0-1	0-2	2	4	6	1	0	1	2	2	0
40	Chandler, Talisha	c	4-7	0-0	0-0	2	3	5	3	8	2	2	0	0
02	Magee, Dedrea	g	1-2	0-0	0-0	0	0	0	1	2	2	3	0	0
21	Mastin, Kate	g	12-19	6-10	2-3	0	2	2	3	32	1	4	0	2
34	Moore, Navonda	g	6-18	1-8	1-3	2	2	4	3	14	4	5	0	2
03	Butler, Alyson		1-1	0-0	0-0	0	0	0	1	2	0	0	0	0
05	Drury, Leah		2-4	0-1	0-0	2	3	5	3	4	1	1	0	0
12	Davis, Nikki		0-4	0-1	0-0	1	0	1	3	0	2	2	0	1
22	Strauthers, Courtney		0-0	0-0	0-0	0	0	0	0	0	0	0	0	0
24	Reshard, Nathalie		0-0	0-0	0-0	0	0	0	0	0	0	2	0	0
50	Barnes, Harriet		3-7	0-0	2-2	4	4	8	2	8	2	0	1	0
Team						1	4	5						
Totals			29-63	7-21	5-10	14	22	36	20	70	15	21	3	5

FG % 1st Half:	13-29	44.8%	2nd half:	16-34	47.1%	Game:	29-63	46.0%
3FG % 1st Half:	3-9	33.3%	2nd half:	4-12	33.3%	Game:	7-21	33.3%
FT % 1st Half:	1-3	33.3%	2nd half:	4-7	57.1%	Game:	5-10	50.0%

Deadball
Rebounds
2

Officials: Sally Bell, Denise Brooks-Clauser, June Courteau
 Technical fouls: Mississippi State-None. Alabama-None.

Attendance: 1738

Alexis Rack: Becomes first player since Tan White to score in double digits in 10 straight games.

Score by periods	1st	2nd	Total
Mississippi State	48	41	89
Alabama	30	40	70

Last FG - MS 2nd-01:11, UA 2nd-00:56.
 Largest lead - MS by 24 2nd-13:38, UA by 1 1st-18:17.

Points	In Paint	Off	2nd Chance	Fast Break	Bench
MS	36	31	12	2	23
UA	38	22	11	2	14

Score tied - 1 time.
 Lead changed - 2 times.

TUSCALOOSA, Ala. - The Mississippi State Lady Bulldog basketball team (17-11, 7-6 SEC) rolled over the Alabama Crimson Tide (10-18, 0-13 SEC) 89-70 in SEC action Thursday night in Tuscaloosa. The Lady Bulldogs, who led by 18 at halftime, maintained their lead in the second half to close out their seventh win in their last 10 games.

In the first period of action, the Lady Bulldogs jumped out quick and went on an 11-3 run to take a 15-7 lead less than five minutes into the contest. UA went on 12-4 run of their own to bring the game to within five points at 27-22. The Crimson Tide would come within five points one more time before MSU put together another strong run to take a 48-30 lead into the lockerroom.

The second stanza proved to be all Mississippi State. The largest lead of the half for the Lady Bulldogs was 23 points. MSU came out strong and went on a 14-4 run to push the score out to a 62-36 advantage.

MSU finished the game shooting 54 percent from the field including a 9-for-19 shooting day from behind the arc.

For the second straight game, MSU had five players in double figures. Freshman Tysheka Grimes led Mississippi State with 20 points while freshman Alexis Rack added 17, including making 4-for-8 from behind the three-point line. Sophomore Robin Porter notched 13 points, seven of those from the charity stripe on eight attempts. Junior Imesia Jackson tallied 12 points and sophomore Marneshia Richard 11.

With Rack's performance, she became the first Lady Bulldog to post double figures in 10-straight games since Tan White did so during the 2004-05 season.

The Lady Bulldogs had another positive day from the free throw line shooting 77 percent (20-of-26). Despite losing the rebounding battle 36-32, MSU won the turnover war 20-15.

Alabama was led by senior Kate Mastin who scored a career-high 32 points in her final regular season game as a member of the Crimson Tide basketball team. Fellow senior Navonda Moore added 14.

NGWSD 2008

MISSISSIPPI STATE VS. TENNESSEE
THURSDAY, FEBRUARY 7, 2008
7 P.M. • CSS



THINK PINK

MISSISSIPPI STATE VS. FLORIDA
SUNDAY, FEBRUARY 10, 2008
1:30 P.M. • SEC-TV



The WBCA's "Think Pink" initiative is a global, unified effort for the Women's Basketball Coaches Association's (WBCA) nation of coaches to assist in raising breast cancer awareness on the court, across campuses, in communities and beyond.

THE KAY YOW/WBCA CANCER FUND

The WBCA recently announced the Kay Yow/WBCA Cancer Fund. We are all in this together to find a cure! For more information on the Kay Yow/WBCA Cancer Fund, visit <http://www.wbca.org/kayyowwbacancerfund.asp>.

2008 ALUMNI WEEKEND

MISSISSIPPI STATE VS. GEORGIA
SUNDAY, FEBRUARY 17, 2008
2 P.M.

For more information, contact the women's basketball office at (662) 325-0198.



2007-08 GAME NOTES

At home.....	9-2
On the road.....	4-3
At neutral sites.....	0-2
In overtime.....	0-0
In double overtime.....	0-0

In games decided by two points or less.....	0-0
In games decided by 3-5 points.....	1-1
In games decided by 6-10 points.....	1-1
In games decided by 11-20 points.....	4-3
In games decided by 20+ points.....	7-2

MSU wins the opening tip.....	10-3
MSU loses the opening tip.....	3-3
MSU scores first.....	10-3
Opponent scores first.....	3-4
Leading at halftime.....	13-1
Trailing at halftime.....	0-6
Tied at halftime.....	0-0

Leading with 10:00 remaining.....	13-0
Trailing with 10:00 remaining.....	0-6
Leading with 5:00 remaining.....	13-0
Trailing with 5:00 remaining.....	0-7

MSU shoots 50% or better.....	1-0
MSU shoots less than 50%.....	12-7
MSU shoots better than opponent.....	11-0
Opponent shoots 50% or better.....	0-3
Opponent shoots less than 50%.....	13-4
Opponent shoots better than MSU.....	2-7

MSU out-rebounds opponent.....	10-0
Opponent out-rebounds MSU.....	3-7
MSU and opponent tie in rebounds.....	0-0

MSU shoots 70% or better from free throw line.....	2-2
MSU has more free throw attempts.....	8-1
Opponent has more free throw attempts.....	6-5
MSU has more fouls than opponent.....	4-5
Opponent has more fouls than MSU.....	9-2

MSU shoots 40% or better from 3-point.....	3-2
Opponent shoots 40% or better from 3-point.....	0-2

MSU has more turnovers.....	3-3
Opponent has more turnovers.....	10-3
MSU and opponent tie in turnovers.....	0-1

MSU scores less than 40 points.....	0-1
MSU scores 40-49 points.....	0-1
MSU scores 50-59 points.....	1-3
MSU scores 60-69 points.....	2-1
MSU scores 70-79 points.....	4-1
MSU scores 80-89 points.....	3-0
MSU scores 90-99 points.....	2-0
MSU scores 100+ points.....	1-0

Opponent scores less than 40 points.....	0-0
Opponent scores 40-49 points.....	1-0
Opponent scores 50-59 points.....	11-1
Opponent scores 60-69 points.....	1-2
Opponent scores 70-79 points.....	0-2
Opponent scores 80-89 points.....	0-2
Opponent scores 90-99 points.....	0-0
Opponent scores 100+ points.....	0-0

On Mondays.....	1-0
On Tuesdays.....	1-0
On Wednesdays.....	0-0
On Thursdays.....	6-2
On Fridays.....	1-1
On Saturdays.....	0-0
On Sundays.....	4-4

In November.....	6-2
In December.....	4-1
In January.....	3-4
In February.....	0-0
In March.....	0-0

Wearing white uniforms.....	9-3
Wearing maroon uniforms.....	4-4

Largest lead surrendered in a loss.....	10 at Arkansas (1/27/08)
Largest halftime lead surrender in a loss.....	3 vs. Georgia Tech (12/16/07)
Largest deficit overcome to win.....	5 at UAB (1/3/08)
Largest halftime deficit overcome to win.....	N/A
Largest halftime deficit in any game.....	33 at LSU (1/20/08)
Largest lead at anytime.....	62 vs. Mississippi Valley State (1/7/07)
Largest deficit at any time.....	54 at LSU (1/20/08)

ATTENDANCE

Home.....	8430
Away.....	15331
Neutral.....	672
Total.....	24403

DOUBLE-FIGURE SCORING

Govero.....	6	11/11, 11/15, 11/27, 12/20, 1/7, 1/10
Grimes.....	12	11/9, 11/15, 11/18, 11/23, 11/27, 11/29, 12/13, 12/16, 12/20, 12/30, 1/3, 1/13
Jackson.....	8	11/9, 11/22, 11/23, 11/27, 11/29, 12/2, 12/20, 1/13
Johnson.....	1	1/7
Porter.....	4	11/27, 11/29, 12/13, 1/24
Rack.....	12	11/11, 11/15, 11/27, 12/2, 12/13, 12/16, 12/30, 1/3, 1/7, 1/10, 1/13, 1/24
Richard.....	9	11/9, 11/18, 11/23, 12/2, 12/20, 12/30, 1/3, 1/24, 1/27
Tate.....	2	11/18, 1/3
Washington.....	4	11/9, 11/11, 11/18, 11/23

DOUBLE-FIGURE REBOUNDING

Govero.....	1	11/15
Grimes.....	2	11/18, 12/20
Jackson.....	4	11/15, 11/23, 11/27, 1/27
Porter.....	1	12/13

DOUBLE-FIGURE ASSISTS

DOUBLE-DOUBLES

Govero.....	1	11/15
Grimes.....	2	11/18, 12/20
Jackson.....	2	11/23, 11/27
Porter.....	1	12/13

CHARGES TAKEN

Grimes.....	3
Jackson.....	13
Rack.....	6
Richard.....	1
Roberts.....	2
Washington.....	2

GAMES MISSED

Richard.....	1	1/13 (broken nose)
Roberts.....	1	11/19 (concussion)
Washington.....	1	11/27 (suspension)

TECHNICAL FOULS

Rack.....	1
Tate.....	1

TECHNICAL FREE THROWS

MSU.....	2/2
Opponent.....	0/0

FOUL OUTS

MSU.....	5
Opponent.....	9

SHARON FANNING



**13TH SEASON AT
MISSISSIPPI STATE
207-168**

**32ND SEASON
OVERALL
530-394**

Now in her 13th season at the helm of the Mississippi State women's basketball team, Sharon Fanning continues to guide the program to new heights. When Fanning first came to Mississippi State University, she had a vision of building a quality Lady Bulldog basketball program. Time combined with hard work and dedication has paid off, as the program has reached national prominence since her arrival before the 1995-96 season. In November 2006, Fanning became the 29th NCAA Division I head coach to record 500 wins.

During her tenure at MSU, Fanning has tutored two Kodak (now State Farm) all-Americans in Tan White (2002-2005) and LaToya Thomas (1999-2003). As a senior, White led the nation in scoring, averaging 23.5 points per game, was named to the Associated Press's All-America Second Team, Frances Pomeroy Naismith recipient, all-SEC First Team selection and became the SEC's all-Time Career Steals Leader in addition to finishing atop five MSU career categories. She became the second Lady Bulldog to be drafted into the WNBA when she went as the No. 2 pick in the 2005 Draft to the Indiana Fever.

COACHING HISTORY

1995-present	Head Women's Basketball Coach <i>Mississippi State University</i>
1987-1995	Head Women's Basketball Coach <i>University of Kentucky</i>
1976-1987	Head Women's Basketball Coach <i>Tennessee-Chattanooga</i>
1976-1978	Head Coach, Basketball Head Coach, Volleyball <i>Tennessee-Chattanooga</i>
1975-1976	Women's Basketball GA Coach <i>University of Tennessee, Knoxville</i>

COACHING MILESTONES

First Career Win	vs. Chattanooga State, 96-66 (UTC)
50th Career Win	at Erskine, 60-59 (UTC)
100th Career Win	Feb. 16, 1982 vs. W. Carolina, 85-66 (UTC)
200th Career Win	Feb. 5, 1988 vs. UAB, 76-69 (Kentucky)
300th Career Win	Jan. 16, 1994 vs. MState, 81-79 (Kentucky)
400th Career Win	March 3, 2000 vs. Auburn, 66-56 (MSU)
500th Career Win	Nov. 10, 2006 vs. Troy, 71-43 (MSU)

2007-08 GAME NOTES

THE LAST TIME MISSISSIPPI STATE

scored 100 points at home	104 vs. Mississippi Valley State (Jan. 7 2008)
scored 100 points on the road	100 at New Orleans (Dec. 4, 2001)
won an overtime game	65-60 vs. Florida State (Nov. 30, 2006)
lost an overtime game	66-72 vs. South Carolina (Feb. 25, 2007)
won a double overtime game	83-75 vs. Kentucky (Jan. 25, 2007)
lost a double overtime game	98-106 vs. Vanderbilt (Feb. 3, 2005)
won regular season tournament	2006 Georgia Tech Holiday Tournament
won NCAA Tournament game	NCAA First Round vs. Manhattan College, 73-47 (March 22, 2003)
won SEC Tournament game	Quarterfinal game vs. Arkansas, 79-74 (March 4, 2004)
made 50 field goals	53 vs. Judson College (Feb. 24, 1986)
made 10 three-point field goals	10 vs. Arkansas-Pine Bluff (Nov. 27, 2007)
made 30 free throws	34 vs. Texas Christian (Dec. 31, 1992)
attempted 100 field goals	104 vs. Montevallo (Nov. 19, 1979)
attempted 30 three-point field goals	31 vs. Florida (March 1, 2007)
attempted 45 free throws	47 vs. Jackson State (Feb. 19, 1992)
had 75 rebounds	78 vs. Judson College (Feb. 24, 1986)
had 10 blocked shots in a game	13 vs. Mississippi Valley (Nov. 26, 2006)
had 35 assists	37 vs. Memphis (Jan. 3, 1980)
had 25 steals	28 vs. Belhaven College (Nov. 30, 1993)
beat a ranked team	No. 22/25 Mississippi, 73-71 (Jan. 28, 2007)
beat a ranked team on the road	No. 22/25 Mississippi, 73-71 (Jan. 28, 2007)
overcame a 10-point halftime deficit to win	vs. Vanderbilt, 26-40 (71-66; Dec. 8, 1988)
had four freshman start a single game	Robin Porter, Lauren Roberts, Heather Hollis and Marneshia Richard at Vanderbilt (Jan. 12, 2006)

THE LAST TIME AN MSU OPPONENT

made 40 field goals in a game	42 by Vanderbilt (Feb. 3, 2005, 20T)
made 10 three-point field goals in a game	10 by Purdue (Dec. 16, 2006)
made 35 free throws	38 by Union University (Dec. 3, 1984)
attempted 45 free throws	49 by Vanderbilt (Feb. 25, 1982)
had 65 rebounds	68 by USM (Feb. 7, 1996)

CAREER SCORING

1.	LaToya Thomas (1999-03).....	2,981
2.	Tan White (2001-05)	2,421
3.	Jennifer Fambrough (1998-02).....	1,677
4.	LaCharlotte Smith (1992-96)	1,533
5.	Sharon Thompson (1994-98).....	1,526
6.	Polly Branch (1982-87)	1,518
7.	Laura Springer (1977-81).....	1,340
8.	Kunshinge Sorrell (1986-88)	1,292
9.	Sophie Ratliff (1986-90).....	1,198
10.	Mary Boatwright (1979-81)	1,177
11.	Lisa Scott (1988-92).....	1,145
12.	Nitra Perry (1996-00).....	1,124
13.	Wanda Calhoun (1974-77).....	1,090
14.	Ann Lashley (1984-88).....	1,086
15.	Daisy Casher (1984-85)	940
16.	Jemmye Ann Helms (1992-97)	917
17.	Cynthia Hall (1997-01).....	891
18.	Angela Harris (1996-00)	872
19.	Sandra Butler (1982-86)	868
20.	Melinda Dudley (1977-81).....	859

CAREER REBOUNDS

1.	LaToya Thomas.....	1,108
2.	Sharon Thompson	936
3.	Tan White	844
4.	Sophie Ratliff.....	822
5.	Nitra Perry	746
6.	Jennifer Fambrough.....	731
7.	Ann Lashley	723
8.	Sandra Butler.....	702
9.	Belinda Woods	614
10.	Daisy Minor	599

CAREER ASSISTS

1.	Angela Harris.....	463
2.	Tan White	457
3.	LaCharlotte Smith	406
4.	Laura Springer.....	392
5.	Polly Branch.....	391
6.	Julan Harris.....	336
7.	Jennifer Fambrough.....	302
8.	Nitra Perry	285
9.	Mary Boatwright.....	279
10.	Marneshia Richard.....	275

CAREER STEALS

1.	Tan White	372
2.	Kunshinge Sorrell	238
3.	LaCharlotte Smith	230
4.	Lisa Scott	205
5.	Angela Harris.....	189
6.	Nitra Perry	186
7.	LaToya Thomas.....	176
8.	Sonya Meadows	168
9.	Polly Branch.....	159
10.	Cynthia Hall	156

CAREER BLOCKS

1.	Tan White	118
2.	LaToya Thomas.....	109
3.	Sharon Thompson	86
4.	Mamie McKinney.....	71
5.	Cara Stokes	62
	Louise Grimes.....	62
7.	Sandra Butler.....	59
8.	Sabrina Scott.....	57
9.	Seneca Anderson	52
10.	Kunshinge Sorrell	49

2007-08 GAME NOTES

THE LAST TIME SOMEONE FOR MISSISSIPPI STATE

scored 20 points.....	20, Alexis Rack vs. Mississippi Valley State (Jan. 7, 2008)
scored 25 points	25, Imesia Jackson vs. Savannah State (Feb. 8, 2007)
scored 30 points.....	30, Imesia Jackson vs. Florida State (Nov. 30, 2006)
scored 35 points.....	38, Tan White vs. Arkansas (March 3, 2005)
scored 40 points	47, Tan White vs. Vanderbilt (Feb. 3, 2005, 2OT)
scored 45 points	47, Tan White vs. Vanderbilt (Feb. 3, 2005, 2OT)
scored in double figures in 10 straight games.....	11 straight, Alexis Rack (Jan. 21-Feb. 25, 2007)
scored double figures in 125 straight games.....	125 straight, LaToya Thomas (Nov. 19, 1999 - March 24, 2003)
scored 20 points in 5 straight games.....	9 straight, Tan White (Feb. 19 - Nov. 26, 2004)
scored 20 points in 10 straight games.....	12 straight, LaToya Thomas (Feb. 1 - March 20, 2001)
scored 20+ points by two players in a game	Tysheka Grimes (28) and Imesia Jackson (23) vs. South Carolina (Jan. 21, 2007)
scored 20+ points by three players in a game.....	Nitra Perry (24), Cynthia Hall (21), & Jennifer Fambrough (21) vs. So. Miss. (Nov. 20, 1999)
scored 30 points in 2 straight games	Tan White (38) vs. Arkansas (March 3, 2005 SEC) & Tan White (34) vs. Auburn (Feb. 27, 2005, OT)
scored 30+ points by two players in a game	Charetta Robinson (33) & Natasha Johnson (30) vs. TCU (Dec. 31, 1992)
scored in double figures by five or more players in a game.....	Grimes (11), Porter (13), Jackson (12), Rack (12) and Govero (10) vs. Arkansas-Pine Bluff (Nov. 27, 2007)
made 10 field goals in a game	11, Tysheka Grimes and 10, Imesia Jackson vs. South Carolina (Jan. 21, 2007)
made 20 field goals in a game	20, LaToya Thomas vs. Tulsa (Nov. 17, 2002)
attempted 15 field goals in a game	18, Alexis Rack vs. LSU (Jan. 20, 2008)
attempted 20 field goals in a game	22, Tysheka Grimes vs. Kentucky (Jan. 13, 2008)
attempted 25 field goals in a game	25, Heather Hollis vs. Vanderbilt (Jan. 12, 2006)
made 10 free throws in a game	10, Marneshia Richard vs. Florida (Feb. 11, 2007)
made 15 free throws in a game	18, Jennifer Fambrough vs. Northwestern State (Dec. 19, 1998)
attempted 10 free throws in a game	14, Imesia Jackson vs. McNeese State (Dec. 20, 2007)
attempted 15 free throws in a game	16, Tan White vs. Vanderbilt (Feb. 3, 2005, 2OT)
attempted 20 free throws in a game	20, LaToya Thomas vs. Alabama (Feb. 7, 2002)
made 5 three-pointers in a game.....	5, Alexis Rack vs. Mississippi Valley State (Jan. 7, 2008)
attempted 5 three-pointers in a game.....	6, Alexis Rack vs. Kentucky (Jan. 13, 2008)
attempted 10 three-pointers in a game.....	13, Alexis Rack at Vanderbilt (Jan. 10, 2008)
attempted 15 three-pointers in a game.....	15, Alexis Rack vs. Purdue (Dec. 16, 2006)
had 10 rebounds	10, Tysheka Grimes vs. McNeese State (Dec. 20, 2007)
had 15 rebounds	16, Robin Porter vs. Tulane (March 18, 2007)
had 20 rebounds	22, LaToya Thomas 22 vs. Montana (Dec. 16, 2001)
had 25 rebounds	26, Sophie Ratliff vs. Shorter College (March 14, 1988)
had 10+ rebounds in 2 straight games	Imesia Jackson - 10 vs. Oklahoma and 11 vs. Arkansas-Pine Bluff (Nov. 23 and 27, 2007)
had 10+ rebounds in 3 straight games	3 straight, Tan White (Jan. 10-16, 2005)
had 10+ rebounds in 5 straight games	6 straight, LaToya Thomas (Feb. 16 - March 17, 2002)
had three players record 10 rebounds.....	Doceide Warren (10), Mamie McKinney (10) and Robin Porter (12) at Mississippi (Jan. 8, 2006)
had 10 offensive rebounds.....	12, Sophie Ratliff vs. Shorter College (Feb. 15, 1988)
had 10 defensive rebounds.....	11, Tysheka Grimes vs. Mississippi (Feb. 18, 2007)
had 10 assists	11, Marneshia Richard vs. South Carolina (Jan. 21, 2007)
had 5 blocks in a game	5, Anissa Lewis vs. Southern University (Jan. 3, 1994)
had 5 steals in a game	5, Marneshia Richard vs. McNeese State (Dec. 20, 2007)
had 20 points and 20 rebounds in a single game	Sophie Ratliff vs. Shorter College, 25 pts. - 26 rbs. (Feb. 15, 1988)
had a double-double	Tysheka Grimes [16 points - 10 rebounds] vs. McNeese State (Dec. 20, 2007)
had a double-double 2 straight games	Imesia Jackson [18 points, 10 rebounds] vs. Oklahoma (Nov. 23, 2007) and [12 points, 11 rebounds] vs. Arkansas-Pine Bluff (Nov. 27, 2007)
had a double-double in 3 straight games	3 straight, Tan White (Jan. 10-16, 2005)
had a double-double in 4 straight games	4 straight, LaToya Thomas (Feb. 2-12, 2003)
had two players record a double-double.....	Robin Porter [15 pts., 16 rbs.] and Imesia Jackson [11 pts., 12 rbs.] vs. Tulane (March 18, 2007)
had 10+ double-doubles in a season.....	12, LaToya Thomas (2002-03)
had a triple-double	Cynthia Hall, 12 points, 10 rebounds and 12 assists vs. La.-Lafayette (Dec. 16, 2000)

THE LAST TIME SOMEONE FOR AN MSU OPPONENT

scored 40 or more points	41 by Chantelle Anderson of Vanderbilt (Feb. 8, 2001)
scored 30 or more points	32 by Kate Mastin of Alabama (Feb. 22, 2007)
attempted 15 or more field goals	15 by Courtnee' Hollins of McNeese State (Dec. 20, 2007)
attempted 25 field goals	25 by Armentie Price of Mississippi (Feb. 18, 2007)
had 15 or more rebounds	16 by Jenee Graham of Iowa (Nov. 22, 2007)
had 20 or more rebounds	20 by Alysha Clark of Belmont (Nov. 20, 2006)
had 10 or more assists	11 by Brittney Vaughn of Arkansas (Jan. 7, 2007)
recorded a double-double.....	Ayana Brereton of Arkansas [11 points - 11 rebounds] (Jan. 28, 2008)

2007-08 GAME NOTES

POINTS-REBOUNDS-ASSISTS

Game	Rector	Rack	Tate	Landers	Reeder	Washington	Roberts	Young
SE Louisiana	0-0-0	5-2-1	1-2-1	DNP	DNP	10-7-1	DNP	DNP
Centenary	5-3-0	14-6-5	8-5-0	0-0-0	0-1-0	10-4-0	DNP	0-1-0
Belmont	2-2-0	13-2-3	2-3-0	DNP	0-1-0	2-1-3	0-1-0	0-0-0
Mercer	2-2-2	21-6-4	11-7-0	2-0-0	2-0-0	10-4-3	0-1-0	0-1-0
Iowa	1-1-0	9-1-2	2-1-0	DNP	0-0-1	4-2-1	DNP	DNP
Oklahoma	3-0-0	5-3-2	4-3-0	DNP	DNP	16-4-1	0-1-0	DNP
UAPB	6-5-2	12-1-4	2-5-2	0-0-0	6-0-1	DNP	0-1-1	DNP
Southern Miss	2-1-0	9-7-6	5-5-0	DNP	0-0-0	2-2-2	DNP	DNP
Memphis	1-4-0	20-5-4	5-7-1	0-0-0	3-0-0	4-7-2	5-1-0	DNP
Louisiana Tech	0-0-0	11-3-3	9-12-1	DNP	0-0-0	0-1-1	DNP	DNP
Georgia Tech	DNP	15-1-0	3-4-0	DNP	DNP	2-0-1	DNP	DNP
McNeese State	4-1-1	6-5-3	3-4-1	0-1-0	3-0-0	6-4-1	3-5-0	DNP
UL-Lafayette	2-0-0	12-3-3	3-7-1	0-0-0	2-1-0	7-8-0	0-1-1	DNP
UAB	DNP	12-9-3	12-7-1	DNP	DNP	7-3-2	DNP	DNP
Mississippi Valley	9-3-0	20-4-4	6-3-0	0-0-0	8-3-3	5-3-1	3-3-0	DNP
Vanderbilt	0-1-0	17-4-5	4-5-0	DNP	DNP	2-1-0	0-0-0	DNP
Kentucky	DNP	10-3-3	5-7-1	DNP	0-0-0	1-3-3	DNP	DNP
LSU	5-0-0	7-3-2	6-5-0	DNP	0-0-0	1-2-0	2-2-0	DNP
Mississippi	0-0-0	11-4-3	0-3-2	DNP	0-1-0	5-2-0	DNP	DNP
Arkansas	DNP	6-0-1	0-2-0	DNP	1-0-0	0-1-0	0-0-0	DNP
Alabama								
Auburn								
Tennessee								
Florida								
Mississippi								
Georgia								
South Carolina								
Tennessee								
LSU								

POINTS-REBOUNDS-ASSISTS

Game	Johnson	Grimes	Porter	Richard	Wilkins	Govero	Campbell	Jackson
SE Louisiana	DNP	14-6-2	0-1-0	18-6-5	DNP	4-4-3	DNP	19-8-1
Centenary	0-0-0	6-3-1	5-4-1	8-6-6	0-0-0	11-1-1	2-3-0	7-7-2
Belmont	DNP	13-7-0	7-3-0	4-5-3	0-0-0	12-11-1	3-0-0	8-13-1
Mercer	4-0-1	11-11-5	4-6-0	11-1-7	2-3-0	4-6-1	0-0-0	5-4-0
Iowa	0-0-0	10-5-1	5-3-0	9-1-0	DNP	4-2-0	DNP	10-5-0
Oklahoma	DNP	11-5-1	2-3-1	14-1-6	DNP	0-1-0	DNP	18-10-1
UAPB	2-1-1	11-4-0	13-5-2	6-1-5	4-0-0	10-2-4	1-1-0	12-11-0
Southern Miss	0-0-0	20-8-2	12-2-2	0-4-1	2-1-0	7-9-3	DNP	18-6-2
Memphis	4-1-1	9-9-3	6-3-4	10-3-6	0-1-0	6-6-2	2-2-0	17-2-0
Louisiana Tech	DNP	14-5-1	10-10-0	7-4-1	DNP	4-6-0	DNP	8-3-2
Georgia Tech	2-1-0	21-2-3	7-5-2	6-2-8	DNP	0-1-0	DNP	2-0-1
McNeese State	0-1-0	16-10-4	4-4-2	14-5-7	2-1-1	14-7-2	3-1-0	16-4-1
UL-Lafayette	0-1-0	19-8-2	6-1-0	13-2-5	2-1-0	6-4-2	0-2-0	8-3-0
UAB	DNP	22-9-3	6-7-2	16-5-3	DNP	1-2-3	DNP	3-4-0
Mississippi Valley	1-4-3	8-3-2	6-1-0	9-3-8	1-4-0	11-4-3	2-2-0	6-1-0
Vanderbilt	2-0-0	3-6-0	7-7-0	3-1-2	DNP	12-5-1	DNP	0-0-0
Kentucky	2-1-0	18-7-0	8-8-4	DNP	DNP	6-3-2	DNP	10-6-1
LSU	DNP	4-4-0	0-5-0	3-2-1	0-0-0	0-2-0	DNP	3-5-0
Mississippi	DNP	9-3-2	11-6-1	14-1-4	DNP	3-4-1	DNP	4-7-0
Arkansas	0-0-0	8-5-1	3-8-0	12-4-3	DNP	4-2-0	DNP	8-10-0
Alabama								
Auburn								
Tennessee								
Florida								
Mississippi								
Georgia								
South Carolina								
Tennessee								
LSU								



#42

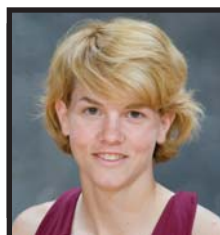
CHANNA CAMPBELL

Sophomore • Forward • 6-2 • Lester, Ala. • West Limestone HS

Hit one three-pointer against McNeese State ... Went 1-for-2 from the line against Arkansas-Pine Bluff ... Attempted and made her first career three-point shot at Belmont ... Scored two points, going one-for-one from the field, in two minutes played against Centenary ... Brought down three rebounds against the Ladies.

CAREER BREAKDOWN

Ten Point Games	0
Twenty Point Games.....	0
Ten Rebound Games.....	0
Ten Assist Games	0
Double Figure Points	0
Double Figure Rebounds	0
Double Figure Assists.....	0
Double-Doubles	0
Times as Leading Scorer	0
Times as Leading Rebounder.....	0
Times as Top Assist Player.....	0



#33

MARY KATHRYN GOVERO

Freshman • Forward • 5-11 • Clinton, Miss. • Mount Salus HS

Earned her first career start against Kentucky, in place of the injured Marneshia Richard ... Came off the bench to score 12 points against Vanderbilt ... Scored 11 points against Mississippi Valley State ... Tallied 14 points against McNeese State ... Brought down six rebounds at Louisiana Tech ... Scored six points and had six rebounds against Memphis ... Brought down nine boards against Southern Miss ... Tallied 10 points against Arkansas-Pine Bluff Scored four points against Iowa ... Scored four points and had six boards against Mercer ... Had her first career double-double with 12 point and 11 rebounds in 18 minutes played at Belmont ... Tallied her first double-figure scoring outing with 11 points against Centenary ... Shot 5-for-9 from the floor against the Ladies ... Saw her first action of the season against Southeastern Louisiana, scoring four points and bringing down four

rebounds ... Contributed three assists against the Lady Lions

CAREER BREAKDOWN

Ten Point Games	6
Twenty Point Games.....	0
Ten Rebound Games.....	1
Ten Assist Games	0
Double Figure Points	6
Double Figure Rebounds	1
Double Figure Assists.....	0
Double-Doubles	1
Times as Leading Scorer	0
Times as Leading Rebounder.....	2
Times as Top Assist Player.....	1



#23

TYSHEKA GRIMES

Sophomore • Forward • 6-0 • Baton Rouge, La. • Capitol HS

Scored nine against Mississippi ... Leading scorer against Kentucky with 18 ... Scored eight points against Mississippi Valley State ... Kept her hot streak going with a season-high 22 points and team and game-high nine rebounds at UAB ... Had 19 points and a game-high eight rebounds against Louisiana-Lafayette ... Had her fourth career double-double against McNeese State ... Leading scorer with 16 points against the Cowgirls ... Scored a season-high 21 points against Georgia Tech for her second 20+ point outing of the season ... Leading scorer at Louisiana Tech with 14 points ... Tallied nine points and brought down nine rebounds against Memphis ... Leading scorer against Southern Miss with 20 points ... Against Arkansas-Pine Bluff, netted 11 points ... Scored 11 points against Oklahoma ... Led the team with 10 points and five boards against Iowa ... Tallied her third ca-

reer double-double with 11 points and 11 rebounds against Mercer ... Posted seven boards and a team-high 13 points at Belmont ... Went 7-for-8 from the charity stripe to tally 14 points against Southeastern Louisiana.

CAREER BREAKDOWN

Ten Point Games	18
Twenty Point Games.....	5
Ten Rebound Games.....	6
Ten Assist Games	0
Double Figure Points	23
Double Figure Rebounds	5
Double Figure Assists.....	0
Double-Doubles.....	4
Times as Leading Scorer	12
Times as Leading Rebounder.....	11
Times as Top Assist Player.....	3



#45

IMESIA JACKSON

Senior • Forward • 6-1 • Crawford, Miss. • SW Tennessee CC

Brought down 10 boards to lead the team at Arkansas ... Leading rebounder against Mississippi with seven boards ... Added 10 points against Kentucky ... Put up six points against Mississippi Valley State ... Co-leading scorer against McNeese State with 16 points ... Scored eight points on 4-of-6 shooting at Louisiana Tech ... Tallied 17 points in the win over Memphis ... Scored 18 points, shooting 8-for-13 from the charity stripe against Southern Miss ... Recorded back-to-back double-doubles with 12 points and 11 boards against Arkansas-Pine Bluff and 18 points and 10 boards against Oklahoma ... Led the team with 10 points and five boards against Iowa ... Scored five points and brought down four boards against Mercer ... Brought down a career-high 13 rebounds at Belmont ... Led the team in rebounding with seven board against Centenary ... Leading scorer against Southeastern Louisiana with

19 points, shooting 7-for-10 from the field ... Tallied eight rebounds against the Lady Lions.

CAREER BREAKDOWN

Ten Point Games	24
Twenty Point Games.....	3
Ten Rebound Games.....	7
Ten Assist Games	0
Double Figure Points	28
Double Figure Rebounds	7
Double Figure Assists.....	0
Double-Doubles	5
Times as Leading Scorer	16
Times as Leading Rebounder.....	13
Times as Top Assist Player.....	1



#22

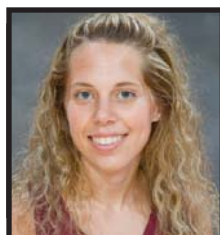
MIAYORKA JOHNSON

Senior • Guard • 5-10 • Ripley, Miss. • Ripley HS

Netted 10 points and four rebounds in 18 minutes of playing time against Mississippi Valley State ... Scored two points against Arkansas-Pine Bluff ... Saw playing time against Iowa ... Scored two points against Mercer ... Saw two minutes of action, tallying one block against Centenary.

CAREER BREAKDOWN

Ten Point Games	15
Twenty Point Games.....	2
Ten Rebound Games.....	2
Ten Assist Games	0
Double Figure Points	17
Double Figure Rebounds	2
Double Figure Assists.....	0
Double-Doubles.....	2
Times as Leading Scorer	6
Times as Leading Rebounder.....	4
Times as Top Assist Player.....	6



#12

CARRIE LANDERS

Sophomore • Guard • 5-8 • Paragould, Ark. • Greene County Tech HS

Brought down her first career rebound against McNeese State ... Played a career-high two minutes at Memphis ... Scored two points against Mercer ... Played one minute against Centenary.

CAREER BREAKDOWN

Ten Point Games	0
Twenty Point Games.....	0
Ten Rebound Games.....	0
Ten Assist Games	0
Double Figure Points	0
Double Figure Rebounds	0
Double Figure Assists.....	0
Double-Doubles.....	0
Times as Leading Scorer	0
Times as Leading Rebounder.....	0
Times as Top Assist Player.....	0



#24

ROBIN PORTER

Junior • Guard/Forward • 5-11 • Abbeville, Ala. • Abbeville HS

Scored 11 points and brought down six boards against archrival Mississippi ... Leading rebounder against Kentucky with an led the team with four assists ... Leading rebounder at Vanderbilt with seven boards ... Scored six points against Mississippi Valley State ... Tallied her seventh career double-double with 10 points and 10 rebounds at Louisiana Tech ... Scored 12 points against USM ... Shot 6-of-10 from the floor for a team-best 13 points against Arkansas-Pine Bluff ... Scored five points and brought down three rebounds against Iowa ... Earned her first start of the season against Mercer ... Brought down six boards against the Bears ... Scored seven points at Belmont ... Had five points and four rebounds against Centenary ... Logged two steals and a rebound in 15 minutes against Southeastern Louisiana.

CAREER BREAKDOWN

Ten Point Games	33
Twenty Point Games.....	1
Ten Rebound Games.....	10
Ten Assist Games	0
Double Figure Points	34
Double Figure Rebounds	10
Double Figure Assists.....	0
Double-Doubles.....	7
Times as Leading Scorer	15
Times as Leading Rebounder.....	21
Times as Top Assist Player.....	9



#2

ALEXIS RACK

Sophomore • Guard • 5-7 • Franklin, La. • Franklin HS

Added 11 points in the win against Mississippi ... Scored 10 points against Kentucky ... Tallied 17 points against Vanderbilt ... Shot 5-of-7 from behind the arc and 6-of-8 from the floor to score 20 points against Mississippi Valley State ... Brought down a career-high nine rebounds and shot 4-of-9 from behind the arc at UAB ... Drained two three-pointers and added 12 points in the win over Louisiana-Lafayette ... Scored 15 points against Georgia Tech ... Scored 11 points at Louisiana Tech ... Dropped 20 points against Memphis on 4-of-9 shooting from behind the arc ... Went 6-for-8 from the free-throw line and had nine points against Southern Miss ... Scored 12 points on 4-of-6 three-point shooting against Arkansas-Pine Bluff ... Tallied nine points against Iowa ... Scored 21 points on 4-of-7 three-point shooting against Mercer ... Had a team-high 13 points at Belmont ... Leading scorer

against Centenary, shooting 4-for-9 from behind the arc for a 14-point outing ... Added five assists against the Ladies ... Tallied five points and two rebounds against Southeastern Louisiana

CAREER BREAKDOWN

Ten Point Games	24
Twenty Point Games.....	5
Ten Rebound Games.....	0
Ten Assist Games	0
Double Figure Points	29
Double Figure Rebounds	0
Double Figure Assists.....	0
Double-Doubles	0
Times as Leading Scorer	14
Times as Leading Rebounder.....	5
Times as Top Assist Player.....	11



#1

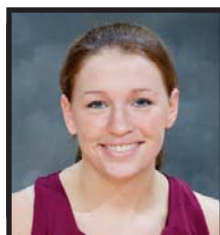
DANIELLE RECTOR

Freshman • Forward • 6-3 • Ringgold, Ga. • Tennessee Temple

Shot 5-of-6 from the charity stripe and added nine points in the win over Mississippi Valley State ... Scored six points and brought down five boards against Arkansas-Pine Bluff ... Went 1-of-1 from the field against Oklahoma ... Made 1-of-2 free throws against Iowa ... Scored two points against Mercer ... At Belmont, scored two points ... Scored the first points of her career with five against Centenary ... Played three minutes in her first collegiate game against Southeastern Louisiana.

CAREER BREAKDOWN

Ten Point Games	0
Twenty Point Games.....	0
Ten Rebound Games.....	0
Ten Assist Games	0
Double Figure Points	0
Double Figure Rebounds	0
Double Figure Assists.....	0
Double-Doubles.....	0
Times as Leading Scorer	0
Times as Leading Rebounder.....	0
Times as Top Assist Player.....	0



#13

AMY REEDER

Senior • Guard/Forward • 6-0 • Pontotoc, Miss. • Pontotoc HS

Netted a season-high eight points and tied her career-high with three assists against Mississippi Valley State ... Hit one three-pointer at Memphis ... Scored six points against Arkansas-Pine Bluff ... Netted playing time against Iowa ... Scored two points against Mercer ... Saw action at Belmont ... Played six minutes against Centenary.

CAREER BREAKDOWN

Ten Point Games	0
Twenty Point Games.....	0
Ten Rebound Games.....	0
Ten Assist Games	0
Double Figure Points	0
Double Figure Rebounds	0
Double Figure Assists.....	0
Double-Doubles.....	0
Times as Leading Scorer	1
Times as Leading Rebounder.....	0
Times as Top Assist Player.....	1



#25

MARNESHIA RICHARD

Junior • Guard • 5-8 • Lamar, Miss. • Ashland HS

Leading scorer against Arkansas with 12 ... Broke into the career top 10 list for assists with four against Mississippi ... Leading scorer against the Lady Rebels with 14 ... Missed the first game of her career against Kentucky due to a broke nose ... Missed almost the entire second half against Vanderbilt after leaving at the 18:13 mark of the second half with an injury ... Dished out a game-high eight assists and had nine points against Mississippi Valley State ... Totaled 16 points at UAB ... Dished the ball out five times and added 13 points on 5-of-9 shooting against Louisiana-Lafayette ... Scored 14 points with seven assists against McNeese State ... Dished out eight assists to tie Angela Harris at fourth on the single game list for juniors ... Scored seven points at Louisiana Tech ... Led team in assists with six against Memphis, while also adding 10 points ... Dished out five assists and had six points against

Arkansas-Pine Bluff ... Tallied 14 points against Oklahoma ... Scored nine points against Iowa ... Had a team-high three assists at Belmont ... Tallied eight points, six rebounds and six assists against Centenary ... Had an impressive opening night, posting 18 points, six rebounds and five assists against Southeastern Louisiana.

CAREER BREAKDOWN

Ten Point Games	28
Twenty Point Games.....	2
Ten Rebound Games.....	0
Ten Assist Games	1
Double Figure Points	30
Double Figure Rebounds	0
Double Figure Assists.....	1
Double-Doubles	1
Times as Leading Scorer	9
Times as Leading Rebounder.....	2
Times as Top Assist Player.....	49



#20

LAUREN ROBERTS

Junior • Forward • 5-11 • Collierville, Tenn. • Houston HS

Hit one three-pointer against Mississippi Valley State ... Brought down five rebounds against McNeese State ... Scored five points at Memphis ... Had one assist and one rebound against Arkansas-Pine Bluff ... Brought down one rebound against Mercer ... Saw her first playing time of the year, bringing down one rebound at Belmont ... Dressed but did not play against Centenary ... Did not play against Southeastern Louisiana due to injury.

CAREER BREAKDOWN

Ten Point Games	7
Twenty Point Games.....	0
Ten Rebound Games.....	0
Ten Assist Games	0
Double Figure Points	7
Double Figure Rebounds	0
Double Figure Assists.....	0
Double-Doubles	0
Times as Leading Scorer	2
Times as Leading Rebounder.....	3
Times as Top Assist Player.....	2



#3

DONNISHA TATE

Junior • Forward • 6-2 • Oakland, Calif. • Tyler (Texas) JC

Scored six points in 10 minutes played against Mississippi Valley State ... Tallied a season-high 12 points at UAB ... Brought down seven rebounds against Louisiana-Lafayette ... Leading rebounder at Louisiana Tech with 12 boards ... Had seven rebounds against Memphis ... Brought down five boards against Arkansas-Pine Bluff ... Scored two points against Iowa ... Tallied 11 points, while bringing down seven assists against Mercer ... Scored eight points and brought down five rebounds against Centenary ... Saw the first action of her career against Southeastern Louisiana.

CAREER BREAKDOWN

Ten Point Games	2
Twenty Point Games.....	0
Ten Rebound Games.....	1
Ten Assist Games	0
Double Figure Points	2
Double Figure Rebounds	1
Double Figure Assists.....	0
Double-Doubles	0
Times as Leading Scorer	0
Times as Leading Rebounder.....	2
Times as Top Assist Player.....	0



#14

BETHANY WASHINGTON

Sophomore • Forward • 5-11 • Houma, La. • Vandebilt Catholic HS

Tallied five points against Mississippi Valley State ... Brought down a team and game-high eight rebounds against Louisiana-Lafayette ... Scored six points against McNeese State ... Brought down seven boards against Memphis ... Shot 7-of-16 from the floor against Oklahoma for 16 points ... Against Iowa, scored four points ... Scored 10 points in the win over Mercer ... Had her second double-figure scoring outing with 10 points against Centenary ... Tallied a career-high five steals against Southeastern Louisiana along with 10 points and seven rebounds.

CAREER BREAKDOWN

Ten Point Games	10
Twenty Point Games.....	0
Ten Rebound Games.....	7
Ten Assist Games	0
Double Figure Points	10
Double Figure Rebounds	7
Double Figure Assists.....	0
Double-Doubles	3
Times as Leading Scorer	1
Times as Leading Rebounder.....	13
Times as Top Assist Player.....	8



#34
SHAI WILKINS

Freshman • Forward • 6-2 • Harvest, Ala. • Sparkman HS

Brought down four boards against Mississippi Valley State ... Shot 2-of-2 from the floor for four points against Arkansas-Pine Bluff ... Tallied two minutes at Belmont ... Played one minute against Centenary.

CAREER BREAKDOWN

Ten Point Games	0
Twenty Point Games.....	0
Ten Rebound Games.....	0
Ten Assist Games	0
Double Figure Points	0
Double Figure Rebounds	0
Double Figure Assists.....	0
Double-Doubles.....	0
Times as Leading Scorer	0
Times as Leading Rebounder.....	1
Times as Top Assist Player.....	0

#1 • DANIELLE RECTOR • FRESHMAN • FORWARD

CAREER	POINTS	SEASON
9 vs. Mississippi Valley State (1/7/08)	REBOUNDS	Same
5 vs. Arkansas-Pine Bluff (11/27/07)	ASSISTS	Same
2, 2x, last vs. Arkansas-Pine Bluff (11/27/07)	BLOCKS	Same
2 at Memphis (12/2/07)	STEALS	Same
2 vs. Mercer (11/18/07)	FGM	Same
2, 2x, last vs. Mississippi Valley State (1/7/08)	FGA	Same
6 vs. Arkansas-Pine Bluff (11/27/07)	3FGM	Same
2 vs. Arkansas-Pine Bluff (11/27/07)	3FGA	Same
4 vs. Arkansas-Pine Bluff (11/27/07)	FTM	Same
5 vs. Mississippi Valley State (1/7/08)	FTA	Same
6 vs. Mississippi Valley State (1/7/08)	MINUTES	Same
12 vs. Arkansas-Pine Bluff (11/27/07)		

#2 • ALEXIS RACK • SOPHOMORE • GUARD

CAREER	POINTS	SEASON
24 at Georgia Tech (12/30/06)	REBOUNDS	21 vs. Mercer (11/18/07)
9 at UAB (1/3/08)	ASSISTS	9 at UAB (1/3/08)
8 vs. Belmont (11/20/06)	BLOCKS	5, 2x, last at Vanderbilt (1/10/08)
1, 7x, last vs. Mississippi (1/24/08)	STEALS	1, 3x, last vs. Mississippi (1/24/08)
4 vs. Mercer (11/18/07)	FGM	4 vs. Mercer (11/18/07)
8, 2x, last vs. Arkansas (2/1/07)	FGA	7 at Memphis (12/2/07)
19 at Vanderbilt (1/10/08)	3FGM	19 at Vanderbilt (1/10/08)
6 at Georgia Tech (12/30/06)	3FGA	5, 2x, last vs. Mississippi Valley State (1/7/08)
15 at Purdue (12/16/06)	FTM	13 at Vanderbilt (1/10/08)
6, 2x, last vs. Southern Miss (11/29/07)	FTA	6 vs. Southern Miss (11/29/07)
8 vs. Southern Miss (11/29/07)	MINUTES	8 vs. Southern Miss (11/29/07)
49 at South Carolina (2/25/07)		36, 2x, last vs. Kentucky (1/13/08)

#3 • DONNISHA TATE • JUNIOR • FORWARD

CAREER	POINTS	SEASON
12 at UAB (1/3/08)	REBOUNDS	Same
12 at Louisiana Tech (12/13/07)	ASSISTS	Same
2 vs. Arkansas-Pine Bluff (11/27/07)	BLOCKS	Same
2 vs. Centenary (11/11/07)	STEALS	Same
3 vs. Southeastern Louisiana (11/9/06)	FGM	Same
4, 3x, last at UAB (1/3/08)	FGA	Same
10 vs. Centenary (11/11/07)	3FGM	Same
None	3FGA	Same
None	FTM	Same
4 at UAB (1/3/08)	FTA	Same
6 at UAB (1/3/08)	MINUTES	Same
22, 2x, last at UAB (1/3/08)		

#13 • AMY REEDER • SENIOR • GUARD/FORWARD

CAREER	POINTS	SEASON
9, 4x, last at Mercer (1/2/07)	REBOUNDS	8 vs. Mississippi Valley State (1/7/08)
3 vs. Troy (11/10/06)	ASSISTS	3 vs. Mississippi Valley State (1/7/08)
3, 2x, last vs. Mississippi Valley State (1/7/08)	BLOCKS	3 vs. Mississippi Valley State (1/7/08)
1, 5x, last vs. LSU (1/14/07)	STEALS	None
2, 2x, last vs. Mississippi Valley State (1/7/08)	FGM	2 vs. Mississippi Valley State (1/7/08)
3, 5x, last vs. Mississippi Valley State (1/7/08)	FGA	3 vs. Mississippi Valley State (1/7/08)
8, 2x, last vs. South Carolina (1/21/07)	3FGM	6 vs. Mississippi Valley State (1/7/08)
3, 2x, last vs. Troy (11/10/06)	3FGA	2 vs. Mississippi Valley State (1/7/08)
6, 6x, last vs. Savannah State (2/8/07)	FTM	4 vs. Mississippi Valley State (1/7/08)
3 vs. South Carolina (2/5/06)	FTA	1 at Arkansas (1/27/08)
4 vs. South Carolina (2/5/06)	MINUTES	2 at Arkansas (1/27/08)
24 vs. Florida (2/9/06)		18 vs. Mississippi Valley State (1/7/08)

#14 • BETHANY WASHINGTON • SOPHOMORE • FORWARD

CAREER	POINTS	SEASON
16, 2x, last vs. Oklahoma (11/23/07)	REBOUNDS	16 vs. Oklahoma (11/23/07)
14 at Southern Mississippi (12/10/06)	ASSISTS	8 vs. Louisiana-Lafayette (12/30/07)
4, 6x, last vs. Savannah State (2/8/07)	BLOCKS	3, 3x, last vs. Kentucky (1/13/08)
2, 6x, last vs. Tulane (3/18/07)	STEALS	1, 3x, last at Louisiana Tech (12/13/07)
5 vs. Southeastern Louisiana (11/9/06)	FGM	5 vs. Southeastern Louisiana (11/9/06)
7, 3x, last vs. Oklahoma (11/23/07)	FGA	7 vs. Oklahoma (11/23/07)
15 at Kentucky (1/25/07)	3FGM	16 vs. Oklahoma (11/23/07)
1, 8x, last vs. Mississippi (1/24/08)	3FGA	1, 3x, last vs. Mississippi (1/24/08)
3, 3x, last vs. Louisiana-Lafayette (12/30/07)	FTM	3, 2x, last vs. Louisiana-Lafayette (12/30/07)
4, 2x, last vs. Mercer (11/18/07)	FTA	4 vs. Mercer (11/18/07)
7 vs. Mercer (11/18/07)	MINUTES	7 vs. Mercer (11/18/07)
43 at Kentucky (1/25/07)		31 vs. Oklahoma (11/23/07)

#20 • LAUREN ROBERTS • JUNIOR • FORWARD

CAREER	POINTS	SEASON
14 vs. Texas Christian (11/25/05)	REBOUNDS	5 at Memphis (12/2/07)
8 vs. Texas Christian (11/25/05)	ASSISTS	5 vs. McNeese State (12/20/07)
5, 2x, last vs. Tennessee State (12/29/06)	BLOCKS	1, 2x, last vs. Louisiana-Lafayette (12/30/07)
2, 3x, last vs. Mississippi Valley (11/26/06)	STEALS	1, 2x, last at Memphis (12/2/07)
5 vs. Southern Mississippi (11/29/05)	FGM	1, 4x, last vs. Mississippi Valley State (1/7/08)
4, 2x, last vs. LSU (1/14/07)	FGA	2 at Memphis (12/2/07)
10 at Mercer (1/2/07)	3FGM	4 vs. McNeese State (12/20/07)
3 at Mississippi (1/28/07)	3FGA	1, 3x, last vs. Mississippi Valley State (1/7/08)
6 at Mississippi (1/28/07)	FTM	2, 3x, last vs. Mississippi Valley State (1/7/08)
8 vs. Vanderbilt (2/15/07)	FTA	None
10 vs. Vanderbilt (2/15/07)	MINUTES	2 vs. Louisiana-Lafayette (12/30/07)
28, 3x, last vs. South Carolina (2/23/06)		13 vs. Mississippi Valley State (1/7/08)

#22 • MIAYORKA JOHNSON • SENIOR • GUARD

CAREER	POINTS	SEASON
21 vs. Birmingham Southern (1/2/06)	REBOUNDS	10 vs. Mississippi Valley State (1/7/08)
12 vs. Florida (2/9/06)	ASSISTS	4 vs. Mississippi Valley State (1/7/08)
5 at New Orleans (12/15/05)	BLOCKS	3 vs. Mississippi Valley State (1/7/08)
2, 3x, last vs. Arkansas-Pine Bluff (11/27/07)	STEALS	2 vs. Arkansas-Pine Bluff (11/27/07)
3, 3x, last vs. Tennessee State (12/29/06)	FGM	1, 4x, last vs. Mississippi Valley State (1/7/08)
9 vs. Birmingham Southern (1/2/06)	FGA	4 vs. Mississippi Valley State (1/7/08)
15 vs. Florida (2/9/06)	3FGM	6 vs. Mississippi Valley State (1/7/08)
3, 3x, last vs. Florida (3/2/06)	3FGA	None
8 vs. Florida (2/9/06)	FTM	1 vs. Mississippi Valley State (1/7/08)
6 at Mississippi (1/8/06)	FTA	2, 2x, last vs. Mississippi Valley State (1/7/08)
9 at Mississippi (1/8/06)	MINUTES	4 Mississippi Valley State (1/7/08)
37, 2x, last vs. Florida (3/2/06)		18 vs. Mississippi Valley State (1/7/08)

#23 • TYSHEKA GRIMES • SOPHOMORE • FORWARD

CAREER	POINTS	SEASON
28 vs. South Carolina (1/21/07)	REBOUNDS	22 at UAB (1/3/08)
11, 3x, last vs. Mercer (11/18/07)	ASSISTS	11 vs. Mercer (11/18/07)
5 vs. Mercer (11/18/07)	BLOCKS	5 vs. Mercer (11/18/07)
4 vs. Mississippi (2/18/07)	STEALS	1, 8x, last vs. Kentucky (1/13/08)
4, 3x, last vs. Iowa (11/22/07)	FGM	4 vs. Iowa (11/22/07)
11 vs. South Carolina (1/21/07)	FGA	8, 2x, last at UAB (1/3/08)
22 vs. Kentucky (1/13/08)	3FGM	22 vs. Kentucky (1/13/08)
4, 3x, last vs. Louisiana-Lafayette (12/30/07)	3FGA	4, 2x, last vs. Louisiana-Lafayette (12/30/07)
7, 2x, last vs. Georgia Tech (12/16/07)	FTM	7 vs. Georgia Tech (12/16/07)
8 vs. Southern Miss (11/29/07)	FTA	8 vs. Southern Miss (11/29/07)
10 vs. Southern Miss (11/29/07)	MINUTES	10 vs. Southern Miss (11/29/07)
37 vs. Mississippi (2/18/07)		36 vs. Georgia Tech (12/16/07)

#24 • ROBIN PORTER • JUNIOR • GUARD/FORWARD

CAREER	POINTS	SEASON
23 at UAB (12/3/06)	REBOUNDS	13 vs. Arkansas-Pine Bluff (11/27/07)
16 vs. Tulane (3/18/07)	ASSISTS	10 at Louisiana Tech (12/13/07)
5 vs. Alabama (2/12/06)	BLOCKS	4, 2x, last vs. Kentucky (1/13/08)
3, 2x, last vs. Tennessee State (12/29/06)	STEALS	2, 3x, last vs. McNeese State (12/20/07)
5 vs. Belmont (11/20/06)	FGM	4, 2x, last at Louisiana Tech (12/13/07)
8, 3x, last 5 vs. UAB (12/3/06)	FGA	6 vs. Arkansas-Pine Bluff (11/27/07)
19 vs. Mississippi (1/26/06)	3FGM	15 vs. Southern Miss (12/29/07)
5 at UAB (12/3/06)	3FGA	2 vs. Southern Miss (11/29/07)
7 at UAB (12/3/06)	FTM	6 vs. Mississippi (1/24/08)
7 at Alabama (2/22/07)	FTA	9 vs. Mississippi (1/24/08)
9, 2x, last vs. Mississippi (1/24/08)	MINUTES	30 vs. Georgia Tech (12/16/07)
37 vs. South Carolina (2/5/06)		

#25 • MARNESHIA RICHARD • JUNIOR • GUARD

CAREER	POINTS	SEASON
24 at Florida (2/11/07)	REBOUNDS	18 vs. Southeastern Louisiana (11/9/07)
7, 3x, last at South Carolina (2/25/07)	ASSISTS	6, 2x, last vs. Centenary (11/11/07)
11 vs. South Carolina (1/21/07)	BLOCKS	8, 2x, last vs. Mississippi Valley State (1/7/08)
2 at South Carolina (2/25/07)	STEALS	1, 3x, last at UAB (1/3/08)
7 at Purdue (12/16/06)	FGM	5 vs. McNeese State (12/20/07)
8 at Arkansas (1/8/07)	FGA	7 vs. Southeastern Louisiana (11/9/07)
15 vs. Florida (3/1/07)	3FGM	13 at Memphis (12/2/07)
3, 3x, last vs. Oklahoma (11/23/07)	3FGA	3 vs. Oklahoma (11/23/07)
5 vs. Oklahoma (11/23/07)	FTM	5 vs. Oklahoma (11/23/07)
10 at Florida (2/11/07)	FTA	5 vs. McNeese State (12/20/07)
10 at Florida (2/11/07)	MINUTES	6, 2x, last vs. Mississippi (1/24/08)
47 at Kentucky (1/25/07)		39, 3x, last at Arkansas (1/27/08)

#32 • SHAI WILKINS • FRESHMAN • FORWARD

CAREER	POINTS	SEASON
4 vs. Arkansas-Pine Bluff (11/27/07)	REBOUNDS	Same
4 vs. Mississippi Valley State (1/7/08)	ASSISTS	Same
1 vs. McNeese State (12/20/07)	BLOCKS	Same
1 vs. Southern Miss (11/29/07)	STEALS	Same
None	FGM	Same
2 vs. Arkansas-Pine Bluff (11/27/07)	FGA	Same
3 vs. McNeese State (12/20/07)	3FGM	Same
None	3FGA	Same
None	FTM	Same
2 vs. Louisiana-Lafayette (12/30/07)	FTA	Same
2, 2x, last vs. Mississippi Valley State (1/7/08)	MINUTES	Same
9 vs. Mississippi Valley State (1/7/08)		

#33 • MARY KATHRYN GOVERO • FRESHMAN • FORWARD

CAREER	POINTS	SEASON
14 vs. McNeese State (12/20/07)	REBOUNDS	Same
11 last at Belmont (11/15/07)	ASSISTS	Same
4 vs. Arkansas-Pine Bluff (11/27/07)	BLOCKS	Same
2, 2x, last vs. Iowa (11/22/07)	STEALS	Same
5 vs. Arkansas-Pine Bluff (11/27/07)	FGM	Same
6, 2x, last vs. McNeese State (12/20/07)	FGA	Same
12 at Vanderbilt (1/10/08)	3FGM	Same
1 vs. Centenary (11/11/07)	3FGA	Same
3 vs. Southeastern Louisiana (11/9/07)	FTM	Same
2, 4x, last vs. Kentucky (1/13/08)	FTA	Same
3 vs. Mississippi (1/24/08)	MINUTES	Same
31 at Vanderbilt (1/10/08)		

#42 • CHANNA CAMPBELL • SOPHOMORE • FORWARD

CAREER	POINTS	SEASON
3, 2x, last at Belmont (11/15/07)	REBOUNDS	3 at Belmont (11/15/07)
4 at Tennessee (1/18/07)	ASSISTS	3 vs. Centenary (11/11/07)
1 vs. Mississippi Valley (11/26/06)	BLOCKS	None
None	STEALS	None
1, 3x, last vs. Grambling (12/19/06)	FGM	1, 3x, last vs. McNeese State (12/20/07)
1, 7x, last vs. McNeese State (12/20/07)	FGA	2, 3x, last vs. Louisiana-Lafayette (12/30/07)
3 at Tennessee (1/18/07)	3FGM	1, 2x, last vs. McNeese State (12/20/07)
1, 2x, last vs. McNeese State (12/20/07)	3FGA	2, 2x, last vs. Louisiana-Lafayette (12/30/07)
2, 2x, last vs. Louisiana-Lafayette (12/30/07)	FTM	2, 2x, last vs. Mississippi Valley State (1/7/08)
2, 2x, last vs. Mississippi Valley State (1/7/08)	FTA	2, 3x, last vs. Mississippi Valley State (1/7/08)
3 at Tennessee (1/18/07)	MINUTES	4 vs. Mississippi Valley State (1/7/08)
13 at Tennessee (1/18/07)		

#45 • IMESIA JACKSON • SENIOR • FORWARD

CAREER	POINTS	SEASON
30 vs. Florida State (11/30/06)	REBOUNDS	18 vs. Oklahoma (11/23/07)
13 at Belmont (11/15/07)	ASSISTS	13 at Belmont (11/15/07)
3 vs. New Orleans (12/21/06)	BLOCKS	2, 3x, last at Louisiana Tech (12/13/07)
2, 4x, last vs. Florida (3/1/07)	STEALS	2, 3x, last vs. Mississippi Valley State (1/7/08)
3 vs. Centenary (11/11/07)	FGM	3 vs. Centenary (11/11/07)
11 vs. Florida State (11/30/06)	FGA	7, 2x, last at Memphis (12/2/07)
17, 2x, last at Kentucky (1/25/07)	3FGM	13, 3x, last vs. Kentucky (1/13/08)
None	3FGA	None
None	FTM	None
11 vs. Savannah State (2/8/07)	FTA	8, 3x, last vs. McNeese State (12/20/07)
14 vs. McNeese State (12/20/07)	MINUTES	14 vs. McNeese State (12/20/07)
43 at Kentucky (1/25/07)		32 vs. Southern Miss (11/29/07)

2007-08 GAME NOTES

Official Basketball Box Score -- GAME TOTALS -- FINAL STATISTICS

SE Louisiana vs Mississippi State
11-09-07 7 p.m. at Humphrey Coliseum (Starkville, Miss.)

SE Louisiana 55 • 0-1

#	Player		Total		3-Ptr		Rebounds			PF	TP	A	TO	Blk	Stl	Min
			FG-FGA	FG-FGA	FT-FTA	Off	Def	Tot								
01	Carlin, Kristy	f	5-10	1-2	3-3	1	2	3	4	14	3	4	0	1	28	
45	Ivory, Zevy	f	5-6	0-0	1-2	1	2	3	1	11	0	2	1	0	24	
10	Necaise, Brooke	g	3-10	3-10	1-3	0	1	1	3	10	1	2	0	0	29	
15	Mitchell, Charinee	g	0-3	0-1	3-4	1	2	3	2	3	6	3	0	2	28	
33	Gross, Jamaica	g	1-3	0-2	1-2	1	4	5	3	3	0	4	0	0	24	
11	Sinclair, Bethany		1-6	0-2	0-0	1	2	3	0	2	3	4	0	1	18	
12	George, Gabrielle		0-0	0-0	0-0	0	0	0	2	0	0	0	0	0	5	
20	Hix, Chelsea		1-2	0-0	0-0	0	1	1	1	2	1	3	0	0	13	
24	Weaver, Adonna		2-2	0-0	0-2	1	1	2	2	4	0	2	0	0	5	
25	Russell, Shameka		1-2	0-0	1-1	1	0	1	2	3	1	4	0	0	11	
44	Mackie, Rachel		1-2	0-0	1-2	2	4	6	3	3	1	3	0	0	15	
	Team					2	3	5				1				
Totals			20-46	4-17	11-19	11	22	33	23	55	16	32	1	7	200	

FG % 1st Half: 7-19	36.8%	2nd half: 13-27	48.1%	Game: 20-46	43.5%	Deadball Rebounds 2
3FG % 1st Half: 2-9	22.2%	2nd half: 2-8	25.0%	Game: 4-17	23.5%	
FT % 1st Half: 4-9	44.4%	2nd half: 7-10	70.0%	Game: 11-19	57.9%	

Mississippi State 71 • 1-0

#	Player		Total			3-Ptr			Rebounds			PF	TP	A	TO	Blk	Stl	Min					
			FG-FA	FG-FGA	FT-FTA	Off	Def	Tot															
14	Washington, Bethany	f	5-8	0-0	0-0	3	4	7	4	10	1	4	0	5	24								
23	Grimes, Tysheka	f	3-10	1-3	7-8	4	2	6	3	14	2	2	2	0	24								
45	Jackson, Imesia	f	7-10	0-0	5-9	8	0	8	3	19	1	1	0	1	30								
02	Rack, Alexis	g	2-13	1-8	0-0	0	2	2	3	5	1	5	0	1	30								
25	Richard, Marneshia	g	7-11	0-0	4-4	1	5	6	2	18	5	4	1	2	36								
01	Rector, Danielle	g	0-1	0-1	0-0	0	0	0	0	0	0	0	1	0	3								
03	Tate, Donnisha	g	0-0	0-0	1-2	1	1	2	4	1	1	4	0	3	14								
24	Porter, Robin	g	0-0	0-0	0-0	0	1	1	0	0	0	0	1	2	15								
33	Govero, Mary Kathryn	g	2-10	0-3	0-0	2	2	4	2	4	3	1	0	0	24								
Team																							
Totals			26-63			2-15			17-23			21 21 42			21 71			14 22 4 14			200		

FG % 1st Half: 10-31	32.3%	2nd half: 16-32	50.0%	Game: 26-63	41.3%	Deadball Rebounds 0
3FG % 1st Half: 0-9	0.0%	2nd half: 2-6	33.3%	Game: 2-15	13.3%	
FT % 1st Half: 6-8	75.0%	2nd half: 11-15	73.3%	Game: 17-23	73.9%	

Officials: Dennis DeMayo, Nanette Sisk, Dock Sisk
Technical fouls: SE Louisiana-Carlin, Kristy, Mississippi State-Tate, Donnisha.
Attendance: 661
MSU: 32-2 all-time in home openers and undefeated in home openers during the Sharon Fanning era.

Score by periods	1st	2nd	Total	Points SLU MS	In Paint 28 44	Off T/O 10 26	2nd Chance 4 10	Fast Break 2 18	Bench 14 5
SE Louisiana	20	35	55						
Mississippi State	26	45	71						

Last FG - SLU 2nd-01:20, MS 2nd-00:18.
Largest lead - SLU by 2 1st-09:26, MS by 19 2nd-06:07.
Score tied - 3 times.
Lead changed - 2 times.

Official Basketball Box Score -- GAME TOTALS -- FINAL STATISTICS

Centenary vs Mississippi State
11-11-07 2 p.m. CT at Humphrey Coliseum (Starkville, Miss.)

Centenary 57 • 0-1

#	Player	Total			3-Ptr			Rebounds			PF	TP	A	TO	Blk	Stl	Min
		FG-FGA	FG-FGA	FT-FTA	FG-FGA	FG-FGA	FT-FTA	Off	Def	Tot							
30	Farrell, Anne	f	3-10	0-0	0-0	3	9	12	3	6	0	1	2	1	31		
34	Jackson, Ashley	f	3-6	0-0	5-6	2	3	5	4	11	2	6	0	0	33		
55	Forest, Leslie	c	0-0	0-0	0-0	3	4	7	2	0	0	1	0	0	13		
03	Zaloga, Karolina	g	5-18	0-3	1-3	2	5	7	4	11	3	5	0	2	33		
13	Bush, Sierra	g	6-13	3-8	1-3	2	1	3	4	16	2	5	0	0	35		
01	Jefferson, Monique		1-3	1-2	0-0	1	1	2	0	3	1	1	0	0	6		
15	Hale, Michelle		0-0	0-0	0-2	0	2	2	1	0	0	0	0	0	4		
31	Joseph, Bethany		1-6	1-5	3-3	0	8	8	1	6	0	4	0	1	22		
32	Crockrom, Ricquel		0-0	0-0	0-0	0	0	0	0	0	0	0	0	0	1		
52	Weiler, Sarah		1-1	0-0	2-3	1	2	3	3	4	1	5	0	0	22		
	Team					0	4	4									
Totals			20-57	5-18	12-20	14	39	53	22	57	9	28	2	4	200		
FG % 1st Half: 13-23		56.5%	2nd half: 7-14	20.6%	Game: 20-57	35.1%									Deadball		
3FG % 1st Half: 2-7		28.6%	2nd half: 3-11	27.3%	Game: 1-18	27.8%									Rebounds		
FT % 1st Half: 2-3		66.7%	2nd half: 10-17	58.8%	Game: 1-20	60.0%									2		

FG % 1st Half: 13-23	56.5%	2nd half: 7-34	20.6%	Game: 20-57	35.1%	Deadball Rebounds 2
3FG % 1st Half: 2-7	28.6%	2nd half: 3-11	27.3%	Game: 5-18	27.8%	
FT % 1st Half: 2-3	66.7%	2nd half: 10-17	58.8%	Game: 12-20	60.0%	

Mississippi State 76 • 2-0

#	Player		FG	Total	3-Ptr	FG-FTA	FT-FTA	Off	Def	Tot	PF	TP	A	TO	Blk	Stl	Min		
14	Washington, Bethany	f	5-8	0-0	0-1	2	2	4	1	10	0	1	0	2	25				
23	Grimes, Tysheka	f	3-9	0-2	0-0	2	1	3	4	6	1	1	0	2	16				
45	Jackson, Imesia	f	2-10	0-0	3-4	3	4	7	4	7	2	0	0	3	25				
02	Rack, Alexis	g	5-13	4-9	0-4	1	5	6	0	14	5	4	0	3	30				
25	Richard, Marneshia	g	3-8	0-1	2-2	0	6	6	0	8	6	2	0	3	34				
01	Rector, Danielle		1-3	1-2	2-4	1	2	3	1	5	0	0	0	0	9				
03	Tate, Donnisha		3-10	0-0	2-3	3	2	5	1	8	0	1	2	0	12				
12	Landers, Carrie		0-1	0-1	0-0	0	0	0	0	0	0	0	0	0	1				
13	Reeder, Amy		0-2	0-2	0-0	1	0	1	0	0	0	0	0	0	6				
21	Young, Katherine		0-0	0-0	0-2	0	1	1	2	0	0	0	0	0	2				
22	Johnson, Mayorka		0-0	0-0	0-0	0	0	0	0	0	0	0	1	0	2				
24	Porter, Robin		1-5	1-2	2-2	1	3	4	4	5	1	0	0	1	19				
32	Wilkins, Shai		0-0	0-0	0-0	0	0	0	0	0	0	0	0	0	1				
33	Govero, Mary Kathryn		5-9	1-1	0-0	1	0	1	3	11	1	0	0	1	16				
42	Campbell, Channa		1-1	0-0	0-0	1	2	3	0	2	0	0	0	0	2				
Team									2		1								
Totals			29-79			7-20			11-22			18		29		47		200	

FG % 1st Half: 16-38	42.1%	2nd half: 13-41	31.7%	Game: 29-79	36.7%	Deadball Rebounds 4
3FG % 1st Half: 2-6	33.3%	2nd half: 5-14	35.7%	Game: 7-20	35.0%	
FT % 1st Half: 4-6	66.7%	2nd half: 7-16	43.8%	Game: 11-22	50.0%	

Officials: Joe Cunningham, Gina Cross, Doug Cloud
Technical fouls: Centenary-None, Mississippi State-None.
Attendance: 438
Mary Kathryn Govero: First career double-figure scoring game.

Score by periods	1st	2nd	Total	Points CC MS	In Paint 16 28	Off T/O 19 24	2nd Chance 15 12	Fast Break 0 13	Bench 13 31
Centenary	30	27	57						
Mississippi State	38	38	76						

Last FG - CC 2nd-00:37, MS 2nd-00:57.
Largest lead - CC None, MS by 22 2nd-01:51.
Score tied - 0 times.
Lead changed - 0 times.

Official Basketball Box Score -- GAME TOTALS -- FINAL STATISTICS

Mississippi State vs Belmont
11-15-07 7 p.m. at Curb Event Center (Nashville, Tenn.)

Mississippi State 66 • 3-0

#	Player		Total			3-Ptr			Rebounds			PF	TP	A	TO	Blk	Stl	Min
			FG-FGA	FG-FGA	FT-FTA	FG-FGA	FG-FGA	FT-FTA	Off	Def	Tot							
14	Washington, Bethany	f	1-3	0-0	0-0	1	0	1	4	2	3	3	1	1	16			
23	Grimes, Tysheka	f	6-10	0-1	1-3	2	5	7	2	13	0	4	1	0	29			
45	Jackson, Imesia	f	2-5	0-0	4-7	6	7	13	1	8	1	1	0	1	29			
02	Raak, Alexis	g	3-17	2-10	5-6	0	2	2	3	13	3	4	0	1	32			
25	Richard, Marneshia	g	1-9	0-1	2-2	3	2	5	2	4	3	3	1	2	33			
02	Rector, Danielle	f	0-1	0-0	1-1	0	1	1	2	2	0	0	0	0	3			
03	Tate, Donnisha	f	1-1	0-0	0-2	1	2	3	2	0	0	1	1	1	0			
13	Reeder, Amy	g	0-0	0-0	0-0	0	1	1	0	0	0	1	0	0	2			
20	Roberts, Lauren	f	0-0	0-0	0-0	0	1	1	0	0	0	0	0	0	2			
21	Young, Katherine	f	0-1	0-0	0-0	0	0	0	0	0	0	0	0	0	2			
24	Porter, Robin	f	3-7	1-2	0-0	1	2	3	1	7	0	1	1	1	17			
32	Wilkins, Shai	f	0-1	0-0	0-0	0	0	0	0	0	0	0	0	0	2			
33	Govero, Mary Kathryn	f	6-11	0-2	0-0	0	5	6	11	2	12	1	0	0	1			
42	Campbell, Channa	f	1-2	1-2	0-0	0	0	0	1	3	0	0	0	0	2			
	Team					3	5	8										
	Totals		24-68	4-18	14-22	23	34	57	19	66	11	18	5	6	200			

2007-08 GAME NOTES

Official Basketball Box Score -- GAME TOTALS -- FINAL STATISTICS

Mississippi State vs Iowa

11-22-07 12:30 pm at Moon Palace Resort (Cancun, Mexico)

Mississippi State 54 • 4-1

#	Player		Total		3-Ptr		Rebounds			PF	TP	A	TO	Blk	Stl	Min
			FG-FGA	FT-FTA	FG-FGA	FT-FTA	Off	Def	Tot							
23	Grimes, Tysheka	f	4-13	0-4	2-4	2	3	5	2	10	1	1	1	4	26	
24	Porter, Robin	f	2-7	1-2	0-0	1	2	3	1	5	0	0	2	0	19	
45	Jackson, Imesia	f	3-5	0-0	4-8	3	2	5	2	10	0	1	0	2	28	
02	Rack, Alexis	g	4-12	1-8	0-0	1	0	1	5	9	2	2	0	1	28	
25	Richard, Marneshia	g	4-6	1-2	0-0	0	1	1	3	9	0	3	0	4	33	
01	Rector, Danielle	g	0-1	0-1	1-2	0	1	1	0	1	0	0	0	0	4	
03	Tate, Donnisha	g	1-3	0-0	0-2	0	1	1	1	2	0	1	0	2	11	
13	Reeder, Amy	g	0-2	0-2	0-0	0	0	0	0	0	1	0	0	0	4	
14	Washington, Bethany	g	2-4	0-0	0-2	1	1	2	3	4	1	1	0	1	23	
22	Johnson, Miayorka	g	0-0	0-0	0-0	0	0	0	0	0	0	0	0	0	2	
33	Govero, Mary Kathryn	g	1-5	0-0	2-2	1	1	2	2	4	0	0	2	0	22	
Team						0	0	0								
Totals			21-58	3-19	9-20	9	12	21	19	54	5	9	5	14	200	

FG % 1st Half: 9-28	32.1%	2nd half: 12-30	40.0%	Game: 21-58	36.2%	Deadball Rebounds 7.4
3FG % 1st Half: 1-11	9.1%	2nd half: 2-8	25.0%	Game: 3-19	15.8%	
FT % 1st Half: 2-7	28.6%	2nd half: 7-13	53.8%	Game: 9-20	45.0%	

Iowa 60 • 4-0

#	Player		Total			3-Ptr			Rebounds			PF	TP	A	TO	Blk	Stl	Min
			FG-FGA	FG-FGA	FT-FTA	Off	Def	Tot										
24	Graham, Jenae	f	1-3	0-0	2-3	6	10	16	1	4	4	1	0	0	31			
32	Ausdemore, Wendy	f	6-11	5-8	0-0	3	7	10	1	17	0	5	0	1	32			
51	VandeVenter, Krista	f	2-4	0-0	6-8	1	2	3	2	10	0	1	0	1	32			
44	Skouby, Megan	c	3-4	0-0	0-0	0	1	1	3	6	0	1	0	0	14			
11	Smith, Kristi	g	6-11	3-5	2-2	0	0	0	1	17	7	4	0	1	29			
03	Emmert, Abby		0-0	0-0	0-0	0	0	0	0	0	0	2	0	0	11			
21	Alexander, Kachine		0-0	0-0	2-2	0	0	0	0	2	0	1	0	0	2			
34	Solverson, Johanna		0-6	0-0	2-2	0	3	3	2	2	1	4	1	0	14			
40	Schlapkohl, Stacy		0-3	0-0	0-0	1	0	1	3	0	0	3	0	0	15			
45	Hamlin, JoAnn		1-3	0-0	0-0	1	4	5	5	2	0	0	0	0	20			
Team								0	0									
Totals			19-45	8-13	14-17	12	27	39	18	60	12	24	1	3	200			

FG % 1st Half: 6-15	40.0%	2nd half: 13-30	43.3%	Game: 19-45	42.2%	Deadball Rebounds 1.5
3FG % 1st Half: 3-5	60.0%	2nd half: 5-8	62.5%	Game: 8-13	61.5%	
FT % 1st Half: 10-10	100.0%	2nd half: 4-7	57.1%	Game: 14-17	82.4%	

Officials: Erica Herрман, Kim Davis, Michelle Del Duco

Technical fouls: Mississippi State-None. Iowa-None.

Attendance: 332

Marneshia Richard: Scored 500th career point.

Score by periods	1st	2nd	Total		In	Off	2nd	Fast	
Mississippi State	21	33	54	Points	Paint	T/O	Chance	Break	Bench
Iowa	25	35	60	MS	22	11	4	6	11
				IOWA	8	15	21	4	6

Last FG - MS 2nd-01:32, IOWA 2nd-01:46.

Largest lead - MS by 1 1st-19:00, IOWA by 12 2nd-11:34.

Score tied - 4 times.

Lead changed - 1 time.

Official Basketball Box Score -- GAME TOTALS -- FINAL STATISTICS

Oklahoma vs Mississippi State

11-23-07 1 p.m. at Moon Palace Resort (Cancun, Mexico)

Oklahoma 88 • 2-2

#	Player		Total			3-Ptr			Rebounds			PF	TP	A	TO	Blk	Stl	Min
			FG-FGA	FG-FGA	FT-FTA	Off	Def	Tot										
05	Paris, Ashley	f	10-13	0-0	4-4	4	4	8	1	24	0	0	3	0	29			
21	Thompson, Amanda	f	0-4	0-0	2-2	0	6	6	3	2	6	2	1	2	18			
03	Paris, Courtney	c	8-15	0-0	0-1	3	7	10	3	16	2	2	1	1	30			
11	Plumley, Jenna	g	4-7	4-7	0-0	0	0	0	3	12	5	4	0	3	35			
13	Robinson, Danielle	g	3-7	0-0	1-2	0	4	4	1	7	5	3	0	0	29			
01	Stevenson, Nyeshia		5-7	4-4	3-5	1	2	3	2	17	2	2	0	1	19			
02	Vining, Jenny		0-2	0-2	0-0	0	1	1	0	0	1	1	0	0	4			
04	Olajuwon, Abi		1-1	0-0	0-0	2	0	2	3	2	0	0	0	2	10			
10	Roethlisberger, C		2-3	0-1	2-3	2	0	2	3	6	0	3	1	0	12			
31	Hammond, Rose		0-0	0-0	2-2	0	2	2	2	2	1	2	1	0	14			
Team						0	0	0										
Totals			33-59	8-14	14-19	12	26	38	21	88	22	19	7	9	200			

FG % 1st Half: 16-31	51.6%	2nd half: 17-28	60.7%	Game: 33-59	55.9%	Deadball Rebounds 1.2
3FG % 1st Half: 4-10	40.0%	2nd half: 4-4	100.0%	Game: 8-14	57.1%	
FT % 1st Half: 6-10	60.0%	2nd half: 8-9	88.9%	Game: 14-19	73.7%	

Mississippi State 73 • 4-2

#	Player		Total			3-Ptr			Rebounds			PF	TP	A	TO	Blk	Stl	Min
			FG-FGA	FG-FGA	FT-FTA	FG-FGA	FG-FGA	FT-FTA	Off	Def	Tot							
23	Grimes, Tysheka	f	4-10	1-2	2-2	0	3	3	4	11	1	1	0	1	27			
24	Porter, Robin	f	1-5	0-1	0-0	0	3	3	0	2	1	1	0	0	7			
25	Richard, Marneshia	f	5-10	3-5	1-1	0	1	1	0	14	6	4	0	2	38			
02	Rack, Alexis	g	2-8	1-5	0-0	2	2	4	3	5	2	4	0	0	16			
45	Jackson, Imesia	g	5-12	0-0	8-8	8	2	10	3	18	1	0	0	1	31			
01	Rector, Danielle		1-1	1-1	0-0	0	0	0	0	3	0	1	0	0	2			
03	Tate, Donnisha		1-3	0-0	2-3	1	1	2	4	4	0	1	0	0	25			
14	Washington, Bethany		7-14	1-2	1-3	2	2	4	2	16	1	4	0	1	31			
20	Roberts, Lauren		0-0	0-0	0-0	1	1	2	1	0	0	0	0	0	2			
33	Govero, Mary Kathryn		0-4	0-0	0-0	0	0	1	1	0	0	0	0	0	21			
	Team					0	0	0					1					
Totals			26-67	7-16	14-17	14	16	30	17	73	12	17	0	6	200			

FG % 1st Half: 12-33	36.4%	2nd half: 14-34	41.2%	Game: 26-67	38.8%	Deadball Rebounds 2.2
3FG % 1st Half: 4-7	57.1%	2nd half: 3-9	33.3%	Game: 7-16	43.8%	
FT % 1st Half: 5-7	71.4%	2nd half: 9-10	90.0%	Game: 14-17	82.4%	

Officials: Eric Koch, Camela McMullen, Kary Smith-McGehee

Technical fouls: Oklahoma-None. Mississippi State-None.

Attendance: 340

Imesia Jackson: Fourth career double-double.

Score by periods	1st	2nd	Total		In	Off	2nd	Fast	
Oklahoma	42	46	88	Points	Paint	T/O	Chance	Break	Bench
Mississippi State	33	40	73	OU	46	15	17	0	27
				MS	28	20	16	6	23

Last FG - OU 2nd-00:46, MS 2nd-02:26.

Largest lead - OU by 20 1st-09:14, MS None.

Score tied - 0 times.

Lead changed - 0 times.

Official Basketball Box Score -- GAME TOTALS -- FINAL STATISTICS

Arkansas-Pine Bluff vs Mississippi State

11-27-07 7 p.m. at Humphrey Coliseum (Starkville, Miss.)

Arkansas-Pine Bluff 56 • 1-3

#	Player		Total		3-Ptr		Rebounds			PF	TP	A	TO	Blk	Stl	Min
			FG-FGA	FG-FGA	FT-FTA	Off	Def	Tot								
33	Shields, Ciara	f	3-9	0-0	0-1	1	9	10	2	6	1	2	0	1	34	
20	Serebryanskaya, Yuliy	c	0-3	0-0	2-2	1	0	1	5	2	0	3	0	1	18	
10	Ward, Candace	g	2-4	0-0	2-2	0	0	0	4	6	3	5	1	2	24	
14	Green, Africa	g	4-11	0-1	4-4	1	3	4	1	12	2	4	0	1	28	
55	Hughley, Delores	g	6-14	2-5	0-2	0	1	1	2	14	0	5	0	2	29	
05	Slaton, Laquisha	g	0-0	0-0	0-0	0	0	0	0	0	0	1	0	0	4	
21	Martin, Shadae	g	4-7	0-0	3-4	2	5	7	2	11	2	3	0	0	15	
22	Jackson, Tashayla	g	2-6	1-3	0-0	0	0	0	5	0	1	0	1	0	22	
32	Finch-Coleman, Jonae	g	0-2	0-1	0-1	1	1	2	1	0	0	0	0	0	8	
33	Musgrave, Jessica	g	0-1	0-0	0-0	0	0	0	0	0	0	0	0	0	2	
40	Walters, Ava	g	0-1	0-0	0-0	0	1	1	1	0	0	0	0	1	16	
	Team					3	3	6								
Totals			21-58	3-10	11-15	9	23	32	18	56	9	25	1	9	200	

2007-08 GAME NOTES

Official Basketball Box Score -- GAME TOTALS -- FINAL STATISTICS Mississippi State vs Memphis 12-2-07 2 p.m at Elma Roane Fieldhouse (Memphis, Tenn.)

Mississippi State 92 • 7-2

#	Player	Total		3-Ptr	Rebounds			PF	TP	A	TO	Blk	Stl	Min
		FG-FGA	FG-FGA		Off	Def	Tot							
23	Grimes, Tysheka	f	3-10	1-3	2-3	3	6	9	3	9	3	1	1	24
24	Porter, Robin	f	3-7	0-1	0-0	1	2	3	0	6	4	0	0	19
45	Jackson, Imesia	f	7-9	0-0	3-3	2	0	2	4	17	0	3	0	14
02	Rack, Alexis	g	7-13	4-9	2-4	1	4	5	3	20	4	2	0	29
25	Richard, Marneshia	g	5-13	0-2	0-2	0	3	3	2	10	6	1	0	29
01	Rector, Danielle		0-3	0-1	1-2	3	1	4	1	1	0	2	2	7
03	Tate, Donnisha		2-5	0-0	1-2	4	3	7	3	5	1	3	0	14
12	Landers, Carrie		0-0	0-0	0-0	0	0	0	0	0	0	0	0	2
13	Reeder, Amy		1-3	1-2	0-0	0	0	0	0	3	0	0	0	1
14	Washington, Bethany		2-6	0-0	0-0	4	3	7	1	4	2	2	0	1
20	Roberts, Lauren		2-3	1-2	0-0	1	0	1	2	5	0	0	1	6
22	Johnson, Mayorka		2-2	0-0	0-0	0	1	1	0	4	1	0	0	1
32	Wilkins, Shai		0-2	0-0	0-0	0	1	1	1	0	0	2	0	5
33	Govero, Mary Kathryn		3-6	0-1	0-0	2	4	6	3	6	2	0	0	18
42	Campbell, Channa		0-1	0-1	2-2	1	1	2	0	2	0	0	0	2
Team					4	2	6							
Totals			37-83	7-22	11-18	26	31	57	23	92	23	16	4	13
Totals			37-83	7-22	11-18	26	31	57	23	92	23	16	4	13
FG % 1st Half:		22-39	56.4%	2nd half:	15-44	34.1%	Game:	37-83	44.6%	Deadball Rebounds				
3FG % 1st Half:		3-8	37.5%	2nd half:	4-14	28.6%	Game:	7-22	31.8%	Rebounds				
FT % 1st Half:		6-8	75.0%	2nd half:	5-10	50.0%	Game:	11-18	61.1%	2				

Memphis 57 • 2-5

#	Player	Total		3-Ptr	Rebounds			PF	TP	A	TO	Blk	Stl	Min
		FG-FGA	FG-FGA		Off	Def	Tot							
41	Jennings, Aroha	f	3-5	0-0	5-6	0	5	5	2	11	1	2	2	32
42	Thomton, Ashley	f	2-5	0-0	3-3	3	4	7	3	7	1	4	0	18
05	Leonard, Paris	g	4-13	2-4	2-2	3	1	4	2	12	1	3	0	28
11	Winchell, Alex	g	3-12	1-5	0-1	0	1	1	3	7	4	3	0	1
21	Hall, Jessica	g	2-7	0-4	4-4	0	0	0	0	8	1	0	0	22
15	Ellis, Savannah		1-2	0-0	0-0	0	4	4	3	2	0	1	1	17
22	Seagraves, Shae		0-2	0-1	0-0	0	0	0	1	0	0	0	0	4
24	Davis, Alysse		1-5	1-2	0-0	0	2	2	0	3	1	4	1	17
25	Tucker, Valencia		0-2	0-1	0-0	1	0	1	0	0	1	2	0	3
32	Fantroy, Se'Erra		0-0	0-0	2-2	0	2	2	0	2	2	4	0	1
34	Copeland, Shekeira		2-3	0-0	1-4	1	2	3	2	5	0	0	1	10
42	Adams, Hope		0-1	0-0	0-0	1	0	1	0	0	0	0	0	9
Team					2	2	4							
Totals			18-57	4-17	17-24	11	23	34	16	57	11	22	7	4
Totals			18-57	4-17	17-24	11	23	34	16	57	11	22	7	4
FG % 1st Half:		13-31	41.9%	2nd half:	5-26	19.2%	Game:	18-57	31.6%	Deadball Rebounds				
3FG % 1st Half:		4-9	44.4%	2nd half:	0-8	0.0%	Game:	4-17	23.5%	Rebounds				
FT % 1st Half:		5-9	55.6%	2nd half:	12-15	80.0%	Game:	17-24	70.8%	4				

Officials: Ken Drayton, Erica Bradley, Scott Starkey
Technical fouls: Mississippi State-None. Memphis-None.
Attendance: 670
Imesia Jackson: Scores 500th career point.

Score by periods	1st	2nd	Total
Mississippi State	53	39	92
Memphis	35	22	57

Last FG - MS 2nd-00:02, MEMPHIS 2nd-03:42.
Largest lead - MS by 35 2nd-00:02, MEMPHIS by 7 1st-16:28.

Score tied - 1 time.
Lead changed - 4 times.

Official Basketball Box Score -- GAME TOTALS -- FINAL STATISTICS Georgia Tech vs Mississippi State 12-16-07 2 p.m. at Humphrey Coliseum (Starkville, Miss.)

Georgia Tech 70 • 8-1

#	Player	Total		3-Ptr	Rebounds			PF	TP	A	TO	Blk	Stl	Min
		FG-FGA	FG-FGA		Off	Def	Tot							
21	Mitchell, Janie	f	9-14	0-0	5-6	2	6	8	2	23	0	6	0	2
22	Montgomery, Alex	f	2-5	0-1	0-0	2	5	7	0	4	2	1	2	1
01	Williams, Jacqua	g	0-1	0-0	2-2	0	1	1	3	2	1	5	0	1
34	Hemingway, Iasia	g	3-4	0-0	3-5	2	3	5	3	9	0	2	0	0
43	Nnamaka, Chioma	g	4-12	3-8	0-0	0	4	4	2	11	1	2	0	0
10	Ingram, Jill		5-7	0-1	3-3	1	3	4	3	13	2	8	1	4
10	Woolcock, Shaday		0-0	0-0	0-0	0	0	0	0	0	0	0	0	0
12	Turner, Tabitha		0-0	0-0	0-0	0	0	0	0	0	0	0	0	0
23	Foster, Deja		0-0	0-0	0-0	0	0	0	0	0	0	0	0	0
13	Blackmon, Tiffany		0-0	0-0	0-0	0	0	0	0	0	0	0	0	0
35	Ardossi, Brigitte		3-3	0-0	2-3	3	1	4	3	8	1	3	0	2
Team					1	1	2							
Totals			26-46	3-10	15-19	11	24	35	17	70	7	27	3	10
Totals			26-46	3-10	15-19	11	24	35	17	70	7	27	3	10
FG % 1st Half:		12-22	54.5%	2nd half:	14-24	58.3%	Game:	26-46	56.5%	Deadball Rebounds				
3FG % 1st Half:		0-2	0.0%	2nd half:	3-8	37.5%	Game:	3-10	30.0%	Rebounds				
FT % 1st Half:		2-5	40.0%	2nd half:	13-14	92.9%	Game:	15-19	78.9%	2.4				

Mississippi State 58 • 8-3

#	Player	Total		3-Ptr	Rebounds			PF	TP	A	TO	Blk	Stl	Min
		FG-FGA	FG-FGA		Off	Def	Tot							
23	Grimes, Tysheka	f	8-16	4-7	1-2	1	1	2	2	21	3	3	1	1
24	Porter, Robin	f	3-11	0-2	1-2	2	3	5	2	7	2	1	0	3
45	Jackson, Imesia	f	0-0	0-0	2-2	0	0	0	5	2	1	1	0	1
02	Rack, Alexis	g	5-12	5-11	0-0	0	1	1	4	15	0	5	0	2
25	Richard, Marneshia	g	2-9	0-1	2-4	0	2	2	2	6	8	4	0	0
03	Tate, Donnisha		1-2	0-0	1-2	2	2	4	0	3	0	1	0	1
14	Washington, Bethany		1-1	0-0	0-0	0	0	0	0	2	1	2	0	0
22	Johnson, Mayorka		1-1	0-0	0-0	0	1	1	0	2	0	0	0	1
33	Govero, Mary Kathryn		0-2	0-0	0-0	1	0	1	3	0	0	1	0	0
Team					1	0	1							
Totals			21-54	9-21	7-12	7	10	17	18	58	15	18	1	9
Totals			21-54	9-21	7-12	7	10	17	18	58	15	18	1	9
FG % 1st Half:		12-27	44.4%	2nd half:	9-27	33.3%	Game:	21-54	38.9%	Deadball Rebounds				
3FG % 1st Half:		5-10	50.0%	2nd half:	4-11	36.4%	Game:	9-21	42.9%	Rebounds				
FT % 1st Half:		0-0	0.0%	2nd half:	7-12	58.3%	Game:	7-12	58.3%	3.1				

Officials: Dee Kantner, Bonita Spencer, Kelly Johnson
Technical fouls: Georgia Tech-None. Mississippi State-None.
Attendance: 923
Tysheka Grimes: Season-high 21 points.

Score by periods	1st	2nd	Total
Georgia Tech	26	44	70
Mississippi State	29	29	58

Last FG - GT 2nd-04:30, MS 2nd-01:55.
Largest lead - GT by 13 2nd-05:05, MS by 9 1st-15:09.

Score tied - 3 times.
Lead changed - 4 times.

Official Basketball Box Score -- GAME TOTALS -- FINAL STATISTICS Mississippi State vs Louisiana Tech 12-13-07 7 pm at Thomas Assembly Center (Ruston, La.)

Mississippi State 63 • 8-2

#	Player		Total			3-Ptr			Rebounds			PF	TP	A	TO	Blk	Stl	Min
			FG-FA	FG-FGA	FT-FTA	Off	Def	Tot										
23	Grimes, Tysheka	f	4-10	1-4	5-6	2	3	5	4	14	1	4	1	3	27			
24	Porter, Robin	f	4-7	0-0	2-2	5	5	10	4	10	0	3	1	4	18			
45	Jackson, Imesia	f	4-6	0-0	0-0	1	2	3	5	8	2	2	0	0	26			
02	Rack, Alexis	g	2-10	2-9	5-7	0	3	3	3	11	3	9	0	2	30			
25	Richard, Marneshia	g	3-9	1-2	0-0	2	2	4	3	7	1	6	0	1	39			
01	Rector, Danielle		0-0	0-0	0-0	0	0	0	0	0	0	1	0	0	2			
03	Tate, Donnisha		4-5	0-0	1-2	3	9	12	3	9	1	1	0	0	22			
13	Reeder, Amy		0-0	0-0	0-0	0	0	0	0	0	0	0	0	0	1			
14	Washington, Bethany		0-3	0-0	0-0	0	1	1	2	0	1	3	1	2	12			
33	Govero, Mary Kathryn		2-5	0-0	0-0	1	5	6	2	4	0	7	1	0	23			
Team						2	2	4										
Totals				23-55	4-15	13-17	16	32	48	26	63	9	36	4	12	200		
FG % 1st Half:			12-28	42.9%	2nd half:	11-27	40.7%	Game:		23-55	41.8%	Deadball						
3FG % 1st Half:			4-11	36.4%	2nd half:	0-4	0.0%	Game:		4-15	26.7%	Rebounds						
FT % 1st Half:			6-9	66.7%	2nd half:	7-8	87.5%	Game:		13-17	76.5%							

2007-08 GAME NOTES

Official Basketball Box Score -- GAME TOTALS -- FINAL STATISTICS Louisiana-Lafayette vs Mississippi State 12-30-07 3:30 p.m. at Humphrey Coliseum (Starkville, Miss.)

Louisiana-Lafayette 55 • 4-8

#	Player		Total		3-Ptr		Rebounds		PF	TP	A	To	Blk	Stl	Min
			FG-FGA	FG-FGA	FT-FTA	Off	Def	Total							
22	Ratiff, Courtney	f	4-14	1-3	6-8	5	1	6	4	15	1	4	1	5	35
20	Edwards, Sonora	c	2-5	0-1	3-6	3	5	8	4	7	1	1	1	0	31
10	McCants, Elaine	g	2-6	2-3	1-5	0	3	3	1	7	3	3	0	1	32
5	Charles, Onna	g	1-2	0-0	0-0	1	0	1	1	2	0	0	0	0	17
21	McDaniel, Alicia	g	5-12	0-3	1-3	2	5	7	2	11	1	4	0	2	37
00	Rodgers, Bronson		1-1	1-1	0-2	1	0	1	0	3	1	2	0	0	3
02	Barnes, Jasmine		1-1	0-0	0-0	0	2	2	0	2	0	1	0	1	3
05	Dunlap, Whitney		1-8	1-6	0-0	0	0	0	0	3	1	2	0	1	21
25	Clay, D'Mya		2-2	1-1	0-0	0	1	1	0	5	0	3	0	0	7
33	Bell, Lyndra		0-0	0-0	0-0	1	0	1	3	0	0	1	0	0	2
50	Miller, Kina		0-0	0-0	0-0	0	1	1	0	0	0	2	0	0	9
52	Amie, Valanette		0-0	0-0	0-0	0	1	1	0	0	0	1	0	0	3
Team						0	0	0							
Totals			19-51	6-18	11-24	13	19	32	15	55	8	24	2	10	200
FG % 1st Half: 8-23		34.8%	2nd half: 11-28	39.3%	Game: 19-51	37.3%	Deadball Rebounds 6								
3FG % 1st Half: 3-8		37.5%	2nd half: 3-10	30.0%	Game: 6-18	33.3%									
FT % 1st Half: 1-3		33.3%	2nd half: 10-21	47.6%	Game: 11-24	45.8%									

Mississippi State 80 • 10-3

#	Player		Total		3-Ptr		Rebounds		PF	TP	A	TO	Blk	Stl	Min
			FG-FGA	FG-FGA	FT-FTA	Off	Def	Total							
23	Grimes, Tysheka	f	7-10	4-5	1-4	3	5	8	4	19	2	2	0	0	26
24	Porter, Robin	f	3-7	0-1	0-0	0	1	1	3	6	0	2	0	0	15
45	Jackson, Imesia	f	4-6	0-0	0-0	2	1	3	0	8	0	2	0	2	21
02	Rack, Alexis	g	5-11	2-7	0-0	2	1	3	3	12	3	3	0	0	23
25	Richard, Marneshia	g	5-9	1-2	2-2	0	2	2	4	13	5	2	0	2	29
01	Rector, Danielle		0-1	0-0	2-2	0	0	0	1	2	0	0	0	0	4
03	Tate, Donnisha		1-2	0-0	1-2	2	5	7	2	3	1	2	0	0	16
12	Landers, Carrie		0-0	0-0	0-0	0	0	0	0	0	0	0	0	0	1
13	Reeder, Amy		1-1	0-0	0-0	0	1	1	0	2	0	2	0	0	3
14	Washington, Bethany		3-7	1-3	0-1	5	3	8	0	7	0	2	0	1	20
20	Roberts, Lauren		0-2	0-1	0-2	0	1	1	1	0	1	1	0	1	4
22	Johnson, Miayorka		0-0	0-0	0-0	0	1	1	1	0	0	0	0	1	6
32	Wilkins, Shai		0-0	0-0	2-2	0	1	1	0	2	0	0	0	0	3
33	Govero, Mary Kathryn		3-9	0-0	0-0	0	4	4	2	6	2	1	0	2	27
42	Campbell, Channa		0-2	0-2	0-0	2	0	2	1	0	0	1	0	0	2
	Team					0	0	0							
Totals			32-67	8-21	8-15	16	26	42	22	80	14	20	0	9	200
FG % 1st Half: 16-35			45.7%	2nd half: 16-32	50.0%	Game: 32-67			47.8%	Deadball					
3FG % 1st Half: 6-10			60.0%	2nd half: 2-11	18.2%	Game: 8-21			38.1%	Rebounds					
FT % 1st Half: 3-7			42.9%	2nd half: 5-8	62.5%	Game: 8-15			53.3%	7					

Officials: Bryan Enterline, Roy Gubeyan, Barry Roberts

Technical fouls: Louisiana-Lafayette-None. Mississippi State-None.

Attendance: 1059

Bethany Washington: Season-high eight rebounds.

Score by periods			1st	2nd	Total
Louisiana-Lafayette			20	35	55
Mississippi State			41	39	80

Last FG - UL 2nd-00:48, MS 2nd-00:19.

Largest lead - UL by 1 1st-17:35, MS by 31 2nd-02:28.

Score tied - 2 times.
Lead changed - 6 times.

Official Basketball Box Score -- GAME TOTALS -- FINAL STATISTICS Mississippi Valley State vs Mississippi State 1-7-08 7 p.m. at Humphrey Coliseum (Starkville, Miss.)

Mississippi Valley State 45 • 6-5

#	Player		Total		3-Ptr		Rebounds				PF	TP	A	TO	Blk	Stl	Min
			FG-FA	FG-FA	FT-FTA	Off	Def	Total									
03	Williams, Jessica	f	2-7	0-0	0-2	6	4	10	4	4	0	1	0	0	0	27	
40	Messaga, Michelle	f	3-8	0-0	1-2	4	0	4	2	7	0	4	0	1	0	26	
10	Hammond, Amanda	g	4-13	2-8	0-0	1	1	2	2	10	0	7	0	3	0	33	
20	Mackey, Latoia	g	0-2	0-0	0-0	0	1	1	5	0	1	2	0	1	0	23	
24	Arnold, Shakira	g	1-2	0-0	2-2	0	0	0	0	2	4	0	4	0	0	17	
11	Howard, Ashley		2-13	0-2	2-2	5	2	7	0	6	0	1	0	1	0	26	
12	Mayfield, Keyanna		0-1	0-0	0-0	0	0	0	0	0	0	1	0	0	0	6	
22	Williams, Latasha		0-4	0-1	1-2	1	0	1	2	1	0	1	0	2	0	7	
32	Wilson, Portia		3-12	1-1	4-6	4	1	5	5	11	0	4	0	0	2	23	
34	Fisher, Aleana		0-2	0-0	0-0	0	0	0	0	0	0	1	0	0	0	4	
55	Rochelle, Brittany		1-1	0-0	0-0	0	0	0	0	2	0	0	0	0	0	8	
						0	0	0						1			
Totals				16-65	3-12	10-16	21	9	30	22	45	1	27	0	11	200	
FG % 1st Half: 5-26			19.2%	2nd half: 11-39	28.2%	Game: 16-65	24.6%	Deadball Rebounds									
3FG % 1st Half: 2-6			33.3%	2nd half: 1-6	16.7%	Game: 3-12	25.0%										
FT % 1st Half: 2-5			40.0%	2nd half: 8-11	72.7%	Game: 10-16	62.5%										

Mississippi State 104 • 12-3

#	Player		Total		3-Ptr		Rebounds				PF	TP	A	TO	Blk	Stl	Min
			FG-FA	FG-FA	FT-FTA	Off	Def	Total									
23	Grimes, Tysheka	f	3-6	1-2	1-2	2	1	3	2	8	2	1	0	0	0	17	
24	Porter, Robin	f	3-5	0-0	0-0	1	0	1	2	6	0	0	0	0	0	16	
45	Jackson, Imesia	f	2-4	0-0	2-3	1	0	1	0	6	0	0	1	1	1	11	
02	Rack, Alexis	g	6-8	5-7	3-4	1	3	4	2	20	4	0	0	1	1	20	
25	Richard, Marneshia	g	4-4	0-0	1-2	0	3	3	0	9	8	1	0	2	2	20	
01	Rector, Danielle		2-2	0-0	5-6	0	3	3	2	9	0	1	0	0	0	11	
03	Tate, Donnisha		2-3	0-0	2-3	1	2	3	1	6	0	1	0	0	0	10	
12	Landers, Carrie		0-1	0-1	0-0	0	0	0	0	0	0	0	0	0	0	2	
13	Reeder, Amy		3-6	2-4	0-2	0	3	3	0	8	3	2	0	2	1	18	
14	Washington, Bethany		2-3	0-1	1-1	3	0	3	1	5	1	0	0	0	0	13	
20	Roberts, Lauren		1-2	1-2	0-0	1	2	3	3	3	0	3	0	1	1	13	
22	Johnson, Miayorka		4-6	0-1	2-4	1	3	4	2	10	3	4	0	1	1	18	
32	Wilkins, Shai		0-0	0-0	1-2	0	4	4	0	1	0	0	0	0	0	9	
33	Govero, Mary Kathryn		5-6	0-0	1-1	1	3	4	2	11	3	2	0	2	2	18	
42	Campbell, Channa		0-1	0-1	2-2	0	2	2	1	2	0	2	0	0	0	4	
	Team					0	0	0									
Totals			37-57	9-19	21-32	12	29	41	18	104	24	17	1	13	20	200	
FG % 1st Half: 21-34			61.8%	2nd half: 16-23	69.6%	Game: 37-57	64.9%	Deadball									
3FG % 1st Half: 6-12			50.0%	2nd half: 3-7	42.9%	Game: 9-19	47.4%	Rebounds									
FT % 1st Half: 8-11			72.7%	2nd half: 13-21	61.9%	Game: 21-32	65.6%	7.1									

Officials: Wesley Dean, Carla Fountain, Gina Cross

Technical fouls: Mississippi Valley State-None. Mississippi State-None.

Attendance: 285

Amy Reeder: Season-high eight points; Miayorka Johnson: Season-high 10 points;

MSU: First 100-point game since since Dec. 4, 2001 (100-52 win vs. New Orleans); MSU: 59-point margin of victory ties for fifth-highest in school history.

Score by periods			1st	2nd	Total
Mississippi Valley State			14	31	45
Mississippi State			56	48	104

Last FG - MSU 2nd-01:29, MS 2nd-00:35.

Largest lead - MSU by 4 1st-17:52, MS by 62 2nd-00:43.

Score tied - 0 times.
Lead changed - 2 times.

Official Basketball Box Score -- GAME TOTALS -- FINAL STATISTICS Mississippi State vs UAB 1-3-08 7:00 p.m. at Bartow Arena (Birmingham, Ala.)

Mississippi State 79 • 11-3

#	Player		Total		3-Ptr		Rebounds		PF	TP	A	TO	Blk	Stl	Min
			FG-FGA	FG-FGA	FT-FTA	Off	Def	Total							
23	Grimes, Tysheka	f	8-18	2-6	4-4	4	5	9	3	22	3	4	1	0	23
24	Porter, Robin	f	3-7	0-2	0-0	1	6	7	3	6	2	0	0	0	29
45	Jackson, Imesia	f	1-6	0-0	1-2	2	2	4	2	3	0	0	0	2	18
02	Rack, Alexis	f	4-10	4-9	0-1	3	6	9	4	12	3	1	0	1	33
25	Richard, Marneshia	g	6-11	0-1	4-5	2	3	5	0	16	3	3	1	4	37
03	Tate, Donnisha	f	4-7	0-0	4-6	4	3	7	3	12	1	5	0	2	22
14	Washington, Bethany	f	3-7	0-0	1-2	1	2	3	2	7	2	0	0	1	18
33	Govero, Mary Kathryn	f	0-2	0-0	1-2	1	1	2	4	1	3	0	1	1	20
Totals			29-68	6-18	15-22	19	30	49	21	79	17	13	3	11	200
FG % 1st Half: 14-38			36.8%	2nd half: 15-30	50.0%	Game: 29-68		42.6%	Deadball Rebounds 2						
3FG % 1st Half: 2-12			16.7%	2nd half: 4-6	66.7%	Game: 6-18		33.3%							
FT % 1st Half: 7-10			70.0%	2nd half: 8-12	66.7%	Game: 15-22		68.2%							

2007-08 GAME NOTES

Official Basketball Box Score -- GAME TOTALS -- FINAL STATISTICS Kentucky vs Mississippi State 1-13-08 2 p.m. at Humphrey Coliseum (Starkville, Miss.)

Kentucky 64 • 8-8 (2-0 SEC)

#	Player	Total			3-Ptr			Rebounds			PF	TP	A	TO	Blk	Stl	Min
		FG-FGA	FG-FGA	FT-FTA	FG-FGA	FG-FGA	FT-FTA	Off	Def	Tot							
34	Dunlap, Victoria	f	7-8	0-0	3-4	0	9	9	3	17	1	2	4	2	35		
04	Elliott, Sarah	c	2-3	0-0	0-0	0	1	1	2	4	0	2	0	0	9		
11	Mahoney, Samantha	g	5-13	2-4	0-0	0	4	4	1	12	1	2	0	0	38		
24	Smith, Amber	g	4-8	1-3	1-4	0	6	6	3	10	4	2	2	3	31		
25	Franklin, Amani	g	2-7	0-3	1-2	0	4	4	0	5	4	3	1	0	25		
01	Roddy, Eleia	g	0-1	0-0	0-0	0	1	1	2	0	0	1	0	0	4		
02	Chowning, Chelsea	g	0-3	0-3	5-5	0	2	2	2	5	2	2	0	0	15		
12	Watkins, Lydia	g	2-3	0-0	3-4	1	4	5	4	7	0	0	0	0	16		
20	Bowman, Chante	g	2-3	0-0	0-0	0	2	2	0	4	0	2	1	0	9		
32	Bett, Catina	g	0-4	0-0	0-2	5	2	7	1	0	1	1	3	0	18		
Team								0	0	0							
Totals			24-53	3-13	13-21	6	35	41	18	64	13	17	11	5	200		
FG % 1st Half: 13-29		44.8%	2nd half: 11-24	45.8%	Game: 24-53	45.3%	Deadball Rebounds										
3FG % 1st Half: 2-7		28.6%	2nd half: 1-6	16.7%	Game: 3-13	23.1%											
FT % 1st Half: 4-5		80.0%	2nd half: 9-16	56.3%	Game: 13-21	61.9%											

Mississippi State 60 • 12-5 (0-2 SEC)

#	Player	Total			3-Ptr			Rebounds			PF	TP	A	TO	Blk	Stl	Min
		FG-FGA	FG-FGA	FT-FTA	FG-FGA	FG-FGA	FT-FTA	Off	Def	Tot							
23	Grimes, Tysheka	f	7-22	1-6	3-3	3	4	7	1	18	0	1	1	3	35		
24	Porter, Robin	f	4-7	0-1	0-0	0	8	8	2	8	4	0	1	0	27		
45	Jackson, Imesia	f	4-13	0-0	2-5	3	3	6	2	10	1	1	0	1	27		
02	Rack, Alexis	g	4-15	1-6	1-4	0	3	3	3	10	3	3	0	2	36		
33	Govero, Mary Kathryn	g	2-7	0-1	2-2	0	3	3	3	6	2	0	0	1	29		
03	Tate, Donnisha	g	2-3	0-0	1-2	3	4	7	2	5	1	2	0	2	18		
13	Reeder, Amy	g	0-0	0-0	0-0	0	0	0	0	0	0	0	0	0	2		
14	Washington, Bethany	g	0-4	0-1	1-2	1	2	3	4	1	3	1	0	1	23		
22	Johnson, Miayorka	g	1-2	0-0	0-0	1	0	1	0	2	0	1	0	0	8		
Team								0	0	0							
Totals			24-73	2-15	10-18	11	27	38	17	60	14	9	2	10	200		
FG % 1st Half: 13-37		35.1%	2nd half: 11-36	30.6%	Game: 24-73	32.9%	Deadball Rebounds										
3FG % 1st Half: 2-5		40.0%	2nd half: 0-10	0.0%	Game: 2-15	13.3%											
FT % 1st Half: 2-6		33.3%	2nd half: 8-12	66.7%	Game: 10-18	55.6%											

Officials: Bonita Spence, Eddie Novak, Jesse Dickerson
Technical fouls: Kentucky-None. Mississippi State-None.
Attendance: 1261
Opening tipoff resulted in a jump ball violation (noted as a turnover for #04 Kentucky after officials consultation); Mary Kathryn Govero: First career start; Alexis Rack extends her 3FGM streak to 32 games.

Score by periods	1st	2nd	Total
Kentucky	32	32	64
Mississippi State	30	30	60

Last FG - UK 2nd-05:33, MS 2nd-00:01.
Largest lead - UK by 11 1st-07:30, MS by 2 1st-19:45.

	Off	2nd	Fast	
Paint	T/O	Chance	Break	Bench
UK	12	2	8	16
MS	19	6	8	8

Score tied - 4 times.
Lead changed - 1 time.

Official Basketball Box Score -- GAME TOTALS -- FINAL STATISTICS Mississippi State vs LSU 01-20-08 2 p.m. at Maravich Center (Baton Rouge, La.)

Mississippi State 31 • 12-6 (0-3 SEC)

#	Player	Total			3-Ptr			Rebounds			PF	TP	A	TO	Blk	Stl	Min
		FG-FGA	FG-FGA	FT-FTA	FG-FGA	FG-FGA	FT-FTA	Off	Def	Tot							
23	Grimes, Tysheka	f	2-12	0-3	0-0	1	3	4	2	4	0	4	0	2	26		
24	Porter, Robin	f	0-5	0-1	0-0	3	2	5	0	0	0	1	0	0	17		
45	Jackson, Imesia	f	0-4	0-0	3-4	2	3	5	4	3	0	2	1	1	20		
02	Rack, Alexis	g	3-18	0-7	1-3	1	2	3	4	7	2	1	0	0	36		
25	Richard, Marneshia	g	1-7	0-2	1-2	1	1	2	4	3	1	3	0	2	34		
01	Rector, Danielle	g	1-2	1-1	2-2	0	0	0	0	5	0	0	0	0	3		
03	Tate, Donnisha	g	2-3	0-0	2-2	2	3	5	5	6	0	1	0	0	18		
13	Reeder, Amy	g	0-0	0-0	0-0	0	0	0	0	0	0	0	0	0	2		
14	Washington, Bethany	g	0-5	0-1	1-2	0	2	2	2	1	0	2	0	2	16		
20	Roberts, Lauren	g	0-0	0-0	2-3	0	2	2	2	2	0	0	0	0	4		
32	Wilkins, Shai	g	0-0	0-0	0-0	0	0	0	0	0	0	0	0	0	2		
33	Govero, Mary Kathryn	g	0-3	0-0	0-0	1	1	2	3	0	0	1	0	1	22		
Team								2	0	2							
Totals			9-59	1-15	12-18	13	19	32	26	31	3	18	1	8	200		
FG % 1st Half: 4-28		14.3%	2nd half: 5-31	16.1%	Game: 9-59	15.3%	Deadball Rebounds										
3FG % 1st Half: 0-7		0.0%	2nd half: 1-8	12.5%	Game: 1-15	6.7%											
FT % 1st Half: 7-11		63.6%	2nd half: 5-7	71.4%	Game: 12-18	66.7%											

LSU 84 • 14-3 (3-0 SEC)

#	Player	Total			3-Ptr			Rebounds			PF	TP	A	TO	Blk	Stl	Min
		FG-FGA	FG-FGA	FT-FTA	FG-FGA	FG-FGA	FT-FTA	Off	Def	Tot							
54	THOMAS, Ashley	f	1-4	0-1	2-2	3	1	4	3	4	2	0	0	3	18		
34	HOWLES, Sylvia	c	5-8	0-0	1-2	2	5	7	3	11	0	2	0	2	17		
05	WHITE, Erica	g	1-3	1-2	2-4	0	7	7	0	5	2	1	0	0	18		
12	LeBLANC, RaShonta	g	3-5	0-1	0-0	0	5	5	1	6	2	1	1	1	21		
15	CHANEY, Quanna	g	4-8	2-6	6-6	0	1	1	0	16	1	0	0	0	18		
01	GRAHAM, Katherine	g	0-1	0-1	0-0	1	3	4	3	0	0	2	0	3	16		
03	EASON, Latear	g	1-3	0-0	1-2	1	2	3	0	3	1	1	0	0	8		
10	MITCHELL, Khaliah	g	2-3	0-1	6-6	1	2	3	2	10	8	3	1	1	20		
23	HIGHTOWER, Allison	g	2-5	0-2	0-0	2	1	3	0	4	1	1	0	0	13		
24	WHITFIELD, Marian	g	2-4	0-0	4-6	0	1	1	1	8	3	1	0	1	14		
25	WILLIAMS, Mesha	g	5-5	0-0	2-2	0	3	3	1	12	2	0	2	0	17		
44	MORRIS, Kristen	g	1-3	0-0	3-6	0	3	3	4	5	1	1	0	2	20		
Team								0	2	2							
Totals			27-52	3-14	27-36	10	36	46	18	84	23	13	4	13	200		
FG % 1st Half: 15-23		65.2%	2nd half: 12-29	41.4%	Game: 27-52	51.9%	Deadball Rebounds										
3FG % 1st Half: 3-8		37.5%	2nd half: 0-6	0.0%	Game: 3-14	21.4%											
FT % 1st Half: 15-18		83.3%	2nd half: 12-18	66.7%	Game: 27-36	75.0%											

Officials: Wesley Dean, Mary Day, Metta Roberts
Technical fouls: Mississippi State-None. LSU-None.
Attendance: 4323

Score by periods	1st	2nd	Total
Mississippi State	15	16	31
LSU	48	36	84

Last FG - MS 2nd-02:05, LSU 2nd-00:41.
Largest lead - MS None, LSU by 54 2nd-08:30.

In Paint	Off T/O	2nd Chance	Fast Break	Bench
8	7	5	4	14
40	23	11	12	42

Score tied - 0 times.
Lead changed - 0 times.

Official Basketball Box Score -- GAME TOTALS -- FINAL STATISTICS Mississippi vs Mississippi State 1-24-08 7 p.m. at Humphrey Coliseum (Starkville, Miss.)

Mississippi State 52 • 9-8 (2-2 SEC)

#	Player		Total			3-Ptr			Rebounds			PF	TP	A	TO	Blk	Stl	Min
			FG-FGA	FG-FGA	FT-FTA	FG-FGA	FG-FGA	FT-FTA	Off	Def	Tot							
40	Forrest, Danetra	f	0-2	0-0	2-4	2	1	3	1	2	0	1	1	0	23			
35	Goff, Shawn	c	2-10	0-0	0-0	2	4	6	3	4	1	1	0	0	26			
11	Black, Shantell	g	4-13	0-2	6-6	0	3	3	5	14	4	2	0	4	35			
14	Robertson, Elizabeth	g	0-6	0-3	1-2	0	3	3	3	1	0	1	0	1	29			
20	Melson, Kayla	g	5-5	0-0	2-4	1	0	1	5	12	0	5	0	4	20			
03	Phillips, LaKendra		0-1	0-0	1-2	2	0	2	1	1	1	1	0	0	5			
10	Bartee, Carla		5-13	0-2	2-2	4	11	15	3	12	0	2	0	2	30			
22	Worsham, Tasi		0-3	0-2	0-0	1	0	1	1	0	1	0	0	0	2			
45	Thomas, Bianca		1-9	0-4	4-4	0	3	3	0	6	2	1	0	1	30			
Team						0	0	0										
Totals						17-62	0-13	18-24	12	25	37	22	52	9	14	1	12	200
FG % 1st Half: 4-25			16.0%	2nd half: 13-37	35.1%	Game: 17-62	27.4%											Deadball
3FG % 1st Half: 0-9			0.0%	2nd half: 0-4	0.0%	Game: 0-13	0.0%											Rebounds
FT % 1st Half: 12-16			75.0%	2nd half: 6-8	75.0%	Game: 18-24	75.0%											8.3

2007-08 GAME NOTES

Mississippi State Lady Bulldogs Mississippi State Combined Team Statistics (as of Jan 27, 2008) Conference games

RECORD:	OVERALL	HOME	AWAY	NEUTRAL
ALL GAMES.....	(1-4)	(1-1)	(0-3)	(0-0)
CONFERENCE.....	(1-4)	(1-1)	(0-3)	(0-0)
NON-CONFERENCE.....	(0-0)	(0-0)	(0-0)	(0-0)

## Player	GP-GS	Min--Avg	---TOTAL---		Pct	---3-PTS---		Pct	FT-FTA	Pct	----REBOUNDS----				PF	FO	A	TO	Blk	Stl	Pts	Avg
			FG-FGA			3FG-FGA					Off	Def	Tot	Avg								
02 Rack, Alexis.....	5-5	171 34.2	17-75	.227		11-46	.239		6-13	.462	6	8	14	2.8	17	0	14	14	2	5	51	10.2
23 Grimes, Tysheka....	5-5	138 27.6	16-61	.262		4-19	.211		6-8	.750	8	17	25	5.0	11	1	5	15	1	7	42	8.4
25 Richard, Marneshia..	4-4	127 31.8	12-33	.364		4-7	.571		4-8	.500	1	7	8	2.0	11	0	10	16	0	5	32	8.0
24 Porter, Robin.....	5-5	126 25.2	10-26	.385		1-3	.333		8-11	.727	13	21	34	6.8	7	0	5	4	5	2	29	5.8
45 Jackson, Imesia.....	5-5	107 21.4	7-27	.259		0-0	.000		11-16	.688	10	18	28	5.6	16	0	1	8	1	3	25	5.0
33 Govero, Mary Kathy	5-1	127 25.4	10-34	.294		0-4	.000		5-7	.714	8	8	16	3.2	14	0	4	6	2	2	25	5.0
03 Tate, Donni sha.....	5-0	81 16.2	6-14	.429		0-0	.000		3-4	.750	6	16	22	4.4	12	1	3	6	0	2	15	3.0
14 Washington, Bethany	5-0	68 13.6	3-14	.214		1-4	.250		2-4	.500	1	8	9	1.8	8	0	3	5	0	5	9	1.8
01 Rector, Danielle....	3-0	8 2.7	1-3	.333		1-1	1.000		2-2	1.000	0	1	1	0.3	0	0	0	0	0	0	5	1.7
22 Johnson, Mi ayorka..	3-0	20 6.7	2-5	.400		0-0	.000		0-0	.000	1	0	1	0.3	1	0	0	2	0	0	4	1.3
20 Roberts, Lauren....	3-0	12 4.0	0-4	.000		0-2	.000		2-3	.667	0	2	2	0.7	4	0	0	1	0	1	2	0.7
13 Reeder, Amy.....	5-0	13 2.6	0-3	.000		0-3	.000		1-2	.500	0	1	1	0.2	1	0	0	0	0	0	1	0.2
32 Wilkins, Shai.....	1-0	2 2.0	0-0	.000		0-0	.000		0-0	.000	0	0	0	0.0	0	0	0	0	0	0	0	0.0
TEAM.....											5	4	9	1.8	0			3				

Total.....	5	1000	84-299	.281		22-89	.247		50-78	.641	59	111	170	34.0	102	2	45	80	11	32	240	48.0
Opponents.....	5	1000	111-273	.407		17-78	.218		89-131	.679	58	153	211	42.2	84	-	73	74	26	47	328	65.6

TEAM STATISTICS	MS	OPP	DATE	OPPONENT	W/L	SCORE	ATTEND
SCORING.....	240	328	*1-10-08	at Vanderbilt	L	50-72	4303
Points per game.....	48.0	65.6	*1-13-08	KENTUCKY	L	60-64	1261
Scoring margin.....	-17.6	-	*1-20-08	at LSU	L	31-84	4323
FIELD GOALS-ATT.....	84-299	111-273	*1-24-08	MISSISSIPPI	W	57-52	1462
Field goal pct.....	.281	.407	*1-27-08	at Arkansas	L	42-56	3762
3 POINT FG-ATT.....	22-89	17-78	! Caribbean Challenge (Cancun, Mexico)				
3-point FG pct.....	.247	.218	\$ Southeastern Conference Tournament (Nashville, Tenn.)				
3-pt FG made per game..	4.4	3.4	* Southeastern Conference game				
FREE THROWS-ATT.....	50-78	89-131					
Free throw pct.....	.641	.679					
REBOUNDS.....	170	211					
Rebounds per game.....	34.0	42.2					
Rebounding margin.....	-8.2	-					
ASSISTS.....	45	73					
Assists per game.....	9.0	14.6					
TURNOVERS.....	80	74					
Turnovers per game.....	16.0	14.8					
Turnover margin.....	-1.2	-					
Assist/turnover ratio..	0.6	1.0					
STEALS.....	32	47					
Steals per game.....	6.4	9.4					
BLOCKS.....	11	26					
Blocks per game.....	2.2	5.2					
WINNING STREAK.....	0	-					
Home win streak.....	1	-					
ATTENDANCE.....	2723	12388					
Home games-Avg/Game...	2-1362	3-4129					
Neutral site-Avg/Game..	-	0-0					

SCORE BY PERIODS:	1st	2nd	Total
Mississippi State.....	123	117	- 240
Opponents.....	165	163	- 328

2007-08 GAME NOTES

Mississippi State Lady Bulldogs Mississippi State Combined Team Statistics (as of Jan 27, 2008) All games

RECORD:	OVERALL	HOME	AWAY	NEUTRAL
ALL GAMES.....	(13-7)	(9-2)	(4-3)	(0-2)
CONFERENCE.....	(1-4)	(1-1)	(0-3)	(0-0)
NON-CONFERENCE.....	(12-3)	(8-1)	(4-0)	(0-2)

# Player	GP-GS	Min--Avg	---TOTAL---		---3-PTS---		FT-FTA	Pct	----REBOUNDS----				PF	FO	A	TO	Blk	Stl	Pts	Avg
			FG-FGA	Pct	3FG-FGA	Pct			Off	Def	Tot	Avg								
23 Grimes, Tysheka....	20-20	527 26.4	89-229	.389	22-71	.310	45-66	.682	47	71	118	5.9	51	1	35	45	12	28	245	12.3
02 Rack, Alexis.....	20-20	589 29.5	75-238	.315	53-164	.323	32-54	.593	26	47	73	3.7	60	1	60	69	3	32	235	11.8
25 Richard, Marnesia..	19-19	600 31.6	68-155	.439	11-29	.379	30-41	.732	10	47	57	3.0	38	0	82	55	3	40	177	9.3
45 Jackson, Imesia....	20-20	443 22.2	58-129	.450	0-0	.000	66-101	.653	55	54	109	5.5	56	2	12	25	3	18	182	9.1
24 Porter, Robin.....	20-17	412 20.6	51-130	.392	7-20	.350	13-17	.765	34	58	92	4.6	34	0	21	18	15	18	122	6.1
33 Govero, Mary Kathy	20-1	426 21.3	53-137	.387	1-12	.083	12-17	.706	31	52	83	4.2	51	0	29	22	9	21	119	6.0
14 Washington, Bethany	19-3	332 17.5	41-93	.441	3-10	.300	9-21	.429	25	34	59	3.1	32	0	22	36	3	25	94	4.9
03 Tate, Donni sha....	20-0	313 15.7	32-69	.464	0-0	.000	27-47	.574	38	58	96	4.8	42	1	11	35	6	13	91	4.6
01 Rector, Danielle....	16-0	79 4.9	8-25	.320	6-14	.429	20-28	.714	8	15	23	1.4	5	0	5	10	2	3	42	2.6
22 Johnson, Miayorka..	13-0	82 6.3	12-19	.632	0-2	.000	4-6	.667	2	8	10	0.8	6	0	6	10	3	5	28	2.2
42 Campbell, Channa...	8-0	16 2.0	3-10	.300	2-8	.250	5-6	.833	4	7	11	1.4	3	0	0	3	0	0	13	1.6
13 Reeder, Amy.....	16-0	74 4.6	9-30	.300	6-24	.250	1-4	.250	1	6	7	0.4	5	0	5	6	0	3	25	1.6
32 Wilkins, Shai.....	10-0	33 3.3	5-11	.455	0-0	.000	3-4	.750	3	8	11	1.1	2	0	1	3	1	0	13	1.3
20 Roberts, Lauren....	11-0	60 5.5	4-17	.235	3-11	.273	2-5	.400	5	12	17	1.5	12	0	2	6	2	5	13	1.2
12 Landers, Carrie....	7-0	9 1.3	1-3	.333	0-2	.000	0-0	.000	0	1	1	0.1	0	0	0	0	0	0	2	0.3
21 Young, Katherine...	3-0	5 1.7	0-1	.000	0-0	.000	0-2	.000	1	1	2	0.7	2	0	0	1	1	0	0	0.0
TEAM.....									22	23	45	2.3	0			4				
Total.....	20	4000	509-1296	.393	114-367	.311	269-419	.642	312	502	814	40.7	399	5	291	348	63	211	1401	70.1
Opponents.....	20	4000	413-1108	.373	88-306	.288	286-432	.662	246	511	757	37.8	389	-	217	444	76	175	1200	60.0

TEAM STATISTICS	MS	OPP	DATE	OPPONENT	W/L	SCORE	ATTEND
SCORING.....	1401	1200	11-09-07	SE LOUISIANA	W	71-55	661
Points per game.....	70.1	60.0	11-11-07	CENTENARY	W	76-57	438
Scoring margin.....	+10.1	-	11-15-07	at Belmont	W	66-51	370
FIELD GOALS-ATT.....	509-1296	413-1108	11-18-07	MERCER	W	89-51	621
Field goal pct.....	.393	.373	! 11-22-07	vs Iowa	L	54-60	332
3 POINT FG-ATT.....	114-367	88-306	! 11-23-07	vs Oklahoma	L	73-88	340
3-point FG pct.....	.311	.288	11-27-07	ARKANSAS-PINE BLUFF	W	85-56	417
3-pt FG made per game..	5.7	4.4	11-29-07	SOUTHERN MISSISSIPPI	W	77-56	912
FREE THROWS-ATT.....	269-419	286-432	12-2-07	at Memphis	W	92-57	670
Free throw pct.....	.642	.662	12-13-07	at Louisiana Tech	W	63-50	1412
REBOUNDS.....	814	757	12-16-07	GEORGIA TECH	L	58-70	923
Rebounds per game.....	40.7	37.8	12-20-07	MCNEESE STATE	W	94-52	391
Rebounding margin.....	+2.9	-	12-30-07	LOUISIANA-LAFAYETTE	W	80-55	1059
ASSISTS.....	291	217	1-3-08	at UAB	W	79-69	491
Assists per game.....	14.6	10.9	1-7-08	MISSISSIPPI VALLEY STATE	W	104-45	285
TURNOVERS.....	348	444	* 1-10-08	at Vanderbilt	L	50-72	4303
Turnovers per game.....	17.4	22.2	* 1-13-08	KENTUCKY	L	60-64	1261
Turnover margin.....	+4.8	-	* 1-20-08	at LSU	L	31-84	4323
Assist/turnover ratio..	0.8	0.5	* 1-24-08	MISSISSIPPI	W	57-52	1462
STEALS.....	211	175	* 1-27-08	at Arkansas	L	42-56	3762
Steals per game.....	10.6	8.8	! Caribbean Challenge (Cancun, Mexico)				
BLOCKS.....	63	76	\$ Southeastern Conference Tournament (Nashville, Tenn.)				
Blocks per game.....	3.2	3.8	* Southeastern Conference game				
WINNING STREAK.....	0	-					
Home win streak.....	1	-					
ATTENDANCE.....	8430	16003					
Home games-Avg/Game...	11-766	7-2190					
Neutral site-Avg/Game..	-	2-336					

SCORE BY PERIODS:	1st	2nd	Total
Mississippi State.....	681	720	- 1401
Opponents.....	552	648	- 1200